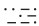


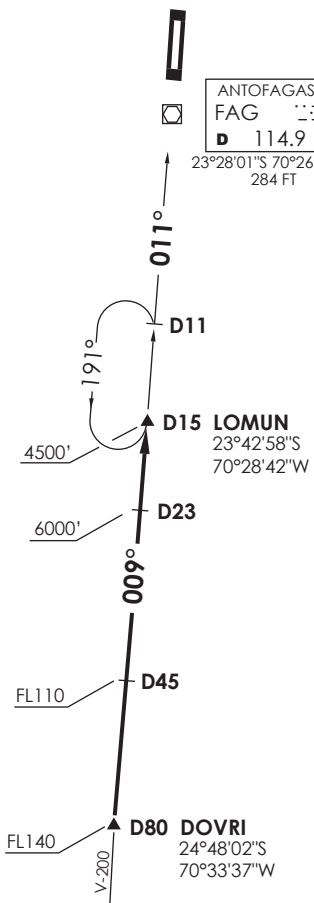
VAR 4.8° W 2024

ANTOFAGASTA

RDR 120.9 / 119.3
 TWR 118.1

ANTOFAGASTA
 FAG 
 D 114.9

23°28'01"S 70°26'52"W
 284 FT



Nivel de Transición por ATC
 Transition Level by ATC

No se ajusta a escala / Not to scale

STAR DOVRI 6C

En DOVRI continuar via R189 (TR009°) directo a LOMUN INT. Cruzar DOVRI FL140 o superior, D45 S FAG FL110 o superior, D23 S 6000 Ft o superior, LOMUN INT 4500FT o superior, luego según autorización ATC.

At DOVRI continue on R189 (TR009°) direct to LOMUN INT. Cross DOVRI at or above FL140, D45 S FAG at or above FL110, D23 S at or above 6000 Ft, LOMUN INT at or above 4500FT, then according to ATC clearance.

DASA / SECCION AIS-MAP