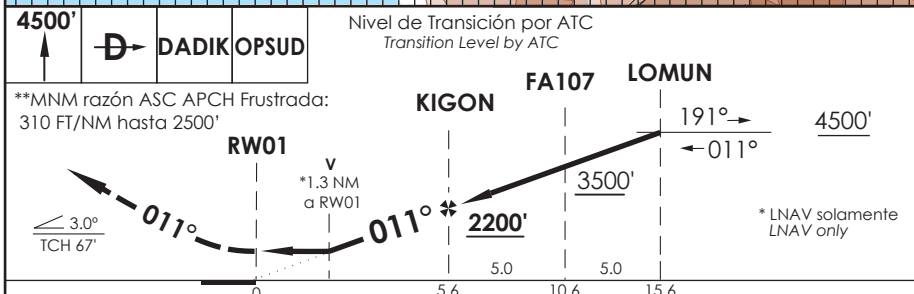
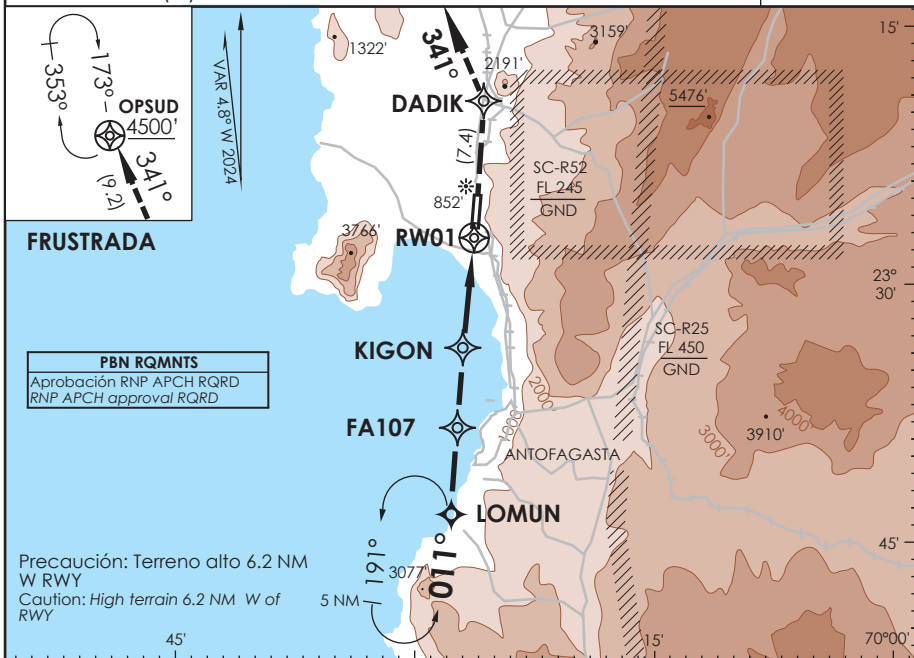


# AP. ANDRÉS SABELLA ANTOFAGASTA - CHILE

SCFA IAC 6  
RNP X Rwy 01

APP ANTOFAGASTA RADAR Antofagasta Approach		120.9 / 119.3	TORRE ANTOFAGASTA Antofagasta Tower		118.1	CONTROL TERRESTRE Ground Control		121.9
<b>RNP</b>	FINAL APCH CRS <b>011°</b>	MNM ALT KIGON <b>2200'</b>	LNAV/VNAV DA(H) <b>600'(254')</b>		AD Elev. <b>455'</b>	THR 01 Elev <b>346'</b>		6500 FT MSA 25 NM RW01
APCH FRUSTRADA: AScenso 4500' directo DADIK-OPSUD, ingreso HLDG 173° derecha o según autorización ATC (**) Missed Apch: Climb to 4500' direct DADIK direct OPSUD, enter on HLDG 173° right or according to ATC clearance (**)								



A B C D	DIRECTO RWY 01 Straight in RWY 01		CIRCULANDO OESTE *** Circling West	ALTN Alternate Minimums
	**LNAV/VNAV DA 600'(254')		LNAV MDA 820'(474')	
	1.3 Km	1.6 Km	980'(525')	1.6 Km
		2.2 Km	1300'(845')	2.0 Km
		1460'(1005')	4.0 Km	
			4.8 Km	VER PAG. GEN 2.19

Para sistemas Baro VNAV no compensados PROC BARO VNAV  
NA BLW 0°C ó ABV 54°C

Veloc. Terrestre Kts	80	100	120	140	160
Angulo DES 3.0°	425'	531'	637'	743'	849'

\*\*\* CAT C-D NA de noche  
\*\*\* Cat C-D not authorized at night

CAMBIO: Nuevo proc  
Change: New proc

DGAC AMDT 98

28 NOVIEMBRE 2024

DASA / SECCION AIS-MAP