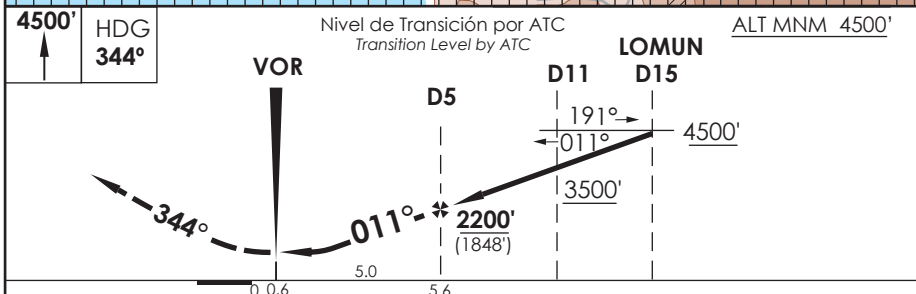
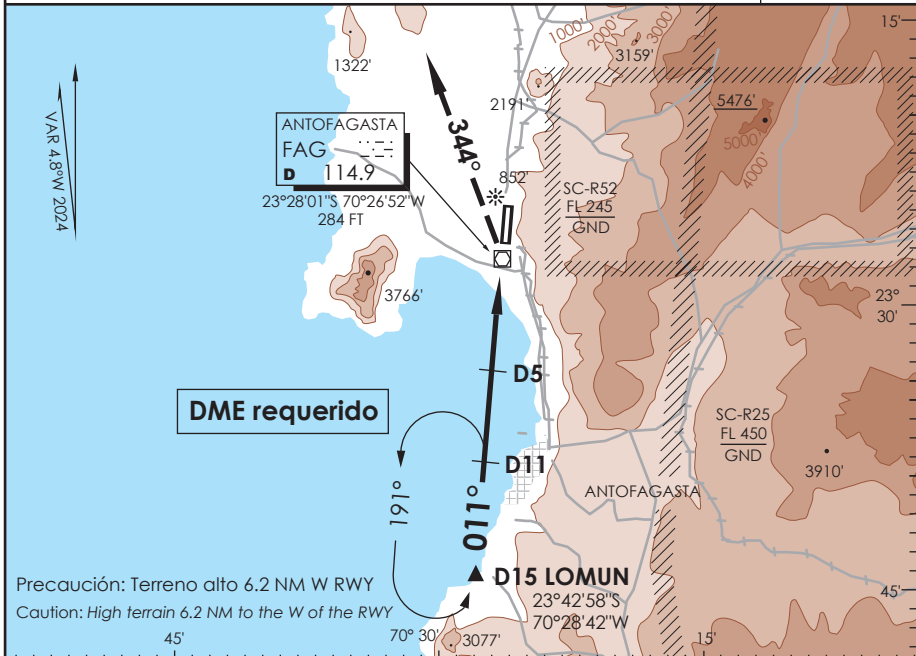


# AP. ANDRÉS SABELLA ANTOFAGASTA - CHILE

SCFA IAC 4  
VOR Z Rwy 01

APP ANTOFAGASTA RADAR Antofagasta Approach 120.9 / 119.3		TORRE ANTOFAGASTA Antofagasta Tower 118.1		CONTROL TERRESTRE Ground Control 121.9	
VOR FAG <b>114.9</b>	FINAL APCH CRS <b>011°</b>	MNM ALT D 5.0 <b>2200'</b>	MDA(H) <b>740' (394')</b>	AD Elev. THR 01 Elev <b>455'</b>	7200 FT MSA 25 NM FAG
APCH FRUSTRADA: Ascenso a 4500' HDG 344°, luego según autorización ATC. Missed Apch: Climb to 4500' on HDG 344°, then according to ATC clearance.					



A-C	DIRECTO RWY 01 <i>Straight in RWY 01</i>	CIRCULANDO OESTE * <i>Circling West</i>	ALTN <i>Alternate Minimums</i>
	MDA <b>740' (394')</b>		
A	1.6 Km	960' (505')	1.6 Km
B		1300' (845')	2.0 Km
C		1460' (1005')	4.0 Km
D			4.8 Km
* CAT C-D NA de noche / <i>Cat C-D not authorized at night</i>			

Veloc. Terrestre Kts	80	100	120	140	160
Angulo DES 2,97° PFM	425'	525'	631'	736'	841'
FAF to MAPt 5.0 NM	3:45	3:00	2:30	2:08	1:52

DASA / SECCION AIS-MAP