
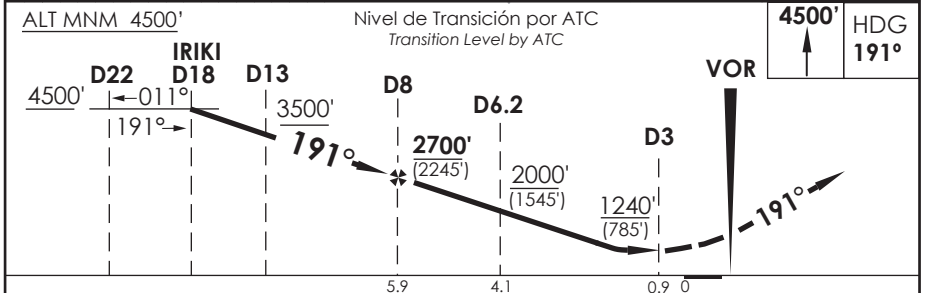
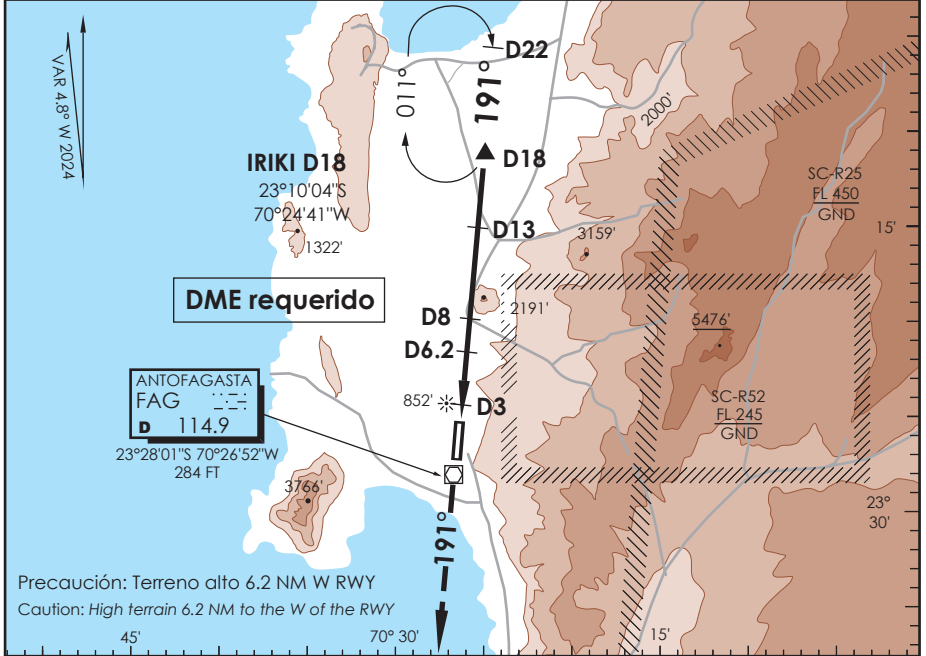


AP. ANDRÉS SABELLA
ANTOFAGASTA - CHILE

SCFA IAC 1
VOR Z Rwy 19

APP ANTOFAGASTA RADAR Antofagasta Approach 120.9 / 119.3		TORRE ANTOFAGASTA Antofagasta Tower 118.1		CONTROL TERRESTRE Ground Control 121.9	
VOR FAG 114.9	FINAL APCH CRS 191°	MNM ALT D 8.0 2700' (2245')	MDA(H) 1240' (785')	AD Elev. THR 19 Elev 455'	 MSA 25 NM FAG
APCH FRUSTRADA: Ascenso a 4500' HDG 191°, luego según autorización ATC. Missed Apch: Climb to 4500' on HDG 191°, then according to ATC clearance.					



CATEGORÍA	DIRECTO RWY 19 Straight in RWY 19		CIRCULANDO OESTE Circling West	ALTN Alternate Minimums
	MDA 1240' (785')			
A	1.6 Km		1240' (785')	1.6 Km
B	2.0 Km		1300'	2.0 Km
C	3.6 Km		(845')	4.0 Km
D	4.0 Km		1460' (1005')	4.8 Km
Veloc. Terrestre Kts		80 100 120 140 160		
Angulo DES 3,5° FPM		496' 619' 743' 867' 991'		
FAF to MAPt 5.0 NM		3:45 3:00 2:30 2:09 1:53		

DASA / SECCION AIS-MAP