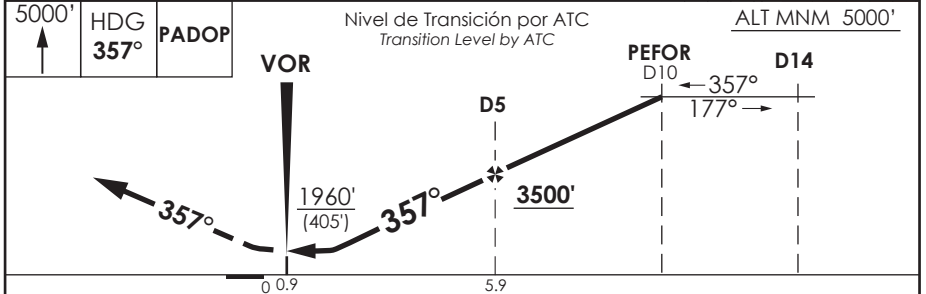
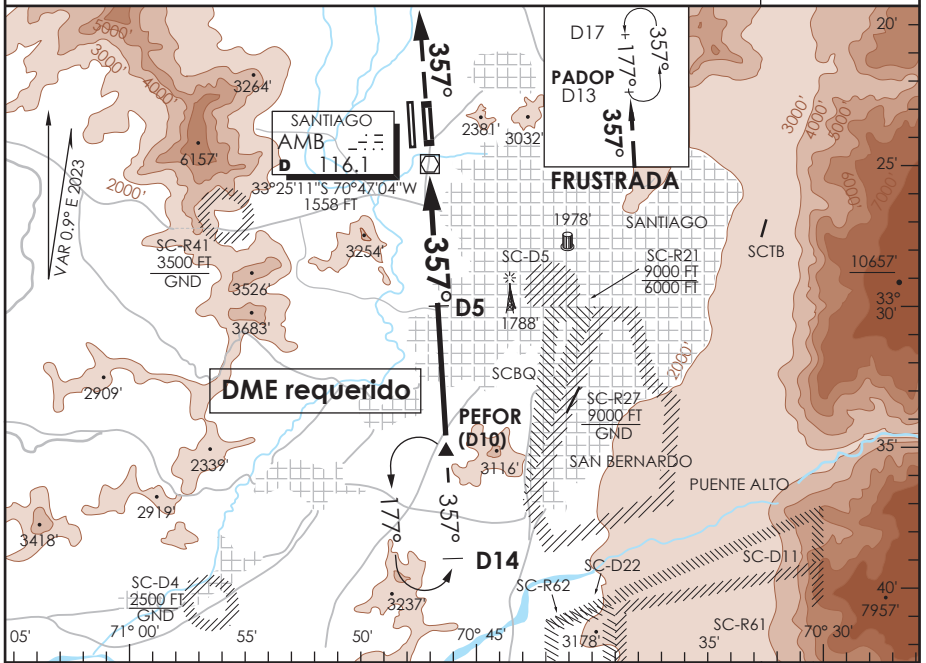


AP. ARTURO MERINO BENITEZ
SANTIAGO - CHILE

SCEL IAC 9
VOR Rwy 35R

ATIS 132.1	SANTIAGO RADAR Santiago Radar 119.7/129.7	TORRE SANTIAGO Santiago Tower 118.1/118.35	CONTROL TERRESTRE Ground Control GNDC W 122.5 GNDC E 122.2/122.6
VOR AMB 116.1	FINAL APCH CRS 357°	MNM ALT D5 3500'	MDA (H) 1960' (405')
AD Elev. 1555' THR 35R Elev. 1555'			19000 FT
APCH FRUSTRADA: Ascenso a 5000' R357° directo PADOP, ingrese a HLDG 177° izquierdo o según autorización ATC. Missed Apch: Climb to 5000' on HDG 357° direct to PADOP, enter on HLDG 177° left or according to ATC clearance.			
			MSA 25 NM AMB



CATEGORIA	DIRECTO RWY 35R <i>Straight in RWY 35R</i>		CIRCULANDO Circling	ALTN Alternate Minimums
	MDA 1960' (405')			
A	SSALS	WO SSALS	NA	VER PAG. GEN 2.19 See page GEN 2.19
B	1.2 Km	1.6 Km		
C	1.6 Km	2.0 Km		
D				

Veloc. Terrestre Kts	80	100	120	140	160
Angulo DES 3.0° FPM	425'	531'	637'	743'	849'
Min:Sec (FAF to MAPT 5.0)	3:45	3:00	2:30	2:09	1:53

DASA / SECCION AIS-MAP