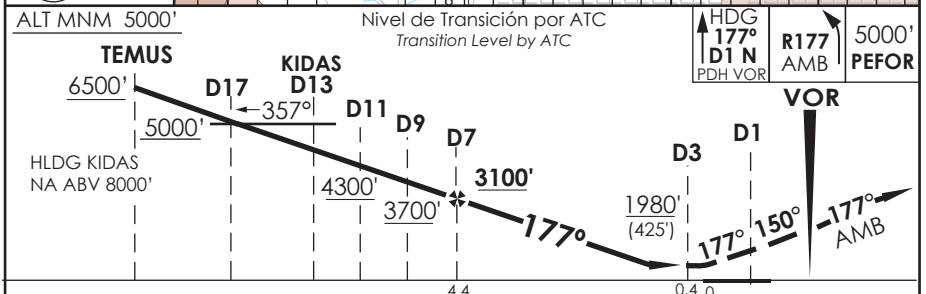
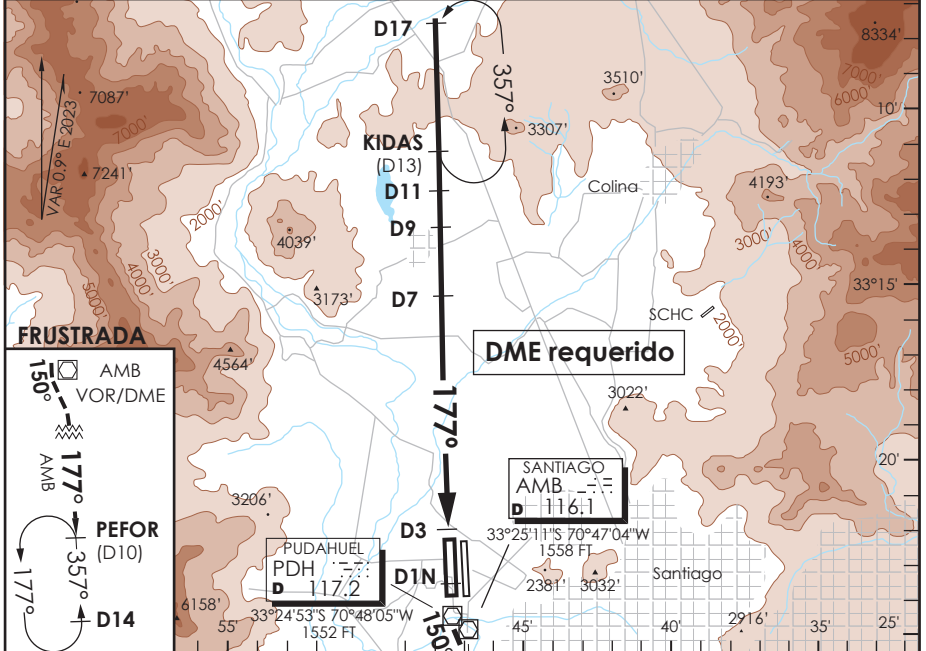


AP. ARTURO MERINO BENITEZ
SANTIAGO - CHILE

SCEL IAC 8
VOR Rwy 17R

ATIS 132.1	SANTIAGO RADAR Santiago Radar 119.7/129.7	TORRE SANTIAGO Santiago Tower 118.1/118.35	CONTROL TERRESTRE Ground Control GNDC W 122.5 GNDC E 122.2/122.6
VOR PDH 117.2	FINAL APCH CRS 177°	MNM ALT D7 3100'	MDA (H) 1980' (425')
AD Elev. 1555' THR 17R Elev. 1551'			19000 FT MSA 25 NM AMB
APCH FRUSTRADA: Ascenso HDG 177° hasta D1N PDH, vire izquierda HDG 150° para interceptar R177 AMB VOR en ascenso a 5000' directo PEFOR, ingrese HLDG 357° izquierdo o según autorización ATC. Missed Apch: Climb on HDG 177° until D1N PDH, turn left HDG 150° to intercept R177 AMB VOR climbing to 5000' direct to PEFOR, enter on HLDG 357° left or according to ATC clearance.			



C A T E G O R Í A	DIRECTO RWY 17R Straight in RWY 17R		CIRCULANDO Circling	ALTN Alternate Minimums		
	MDA 1980' (425')					
	A	1.2 Km	1.6 Km	NA	VER PAG. GEN 2.19 See page GEN 2.19	
	B	1.6 Km	2.0 Km			
D	2.0 Km	2.4 Km				
Veloc. Terrestre Kts	80	100	120	140	160	
Angulo DES 3.2° FPM	453'	566'	679'	793'	906'	
MIN:SEC (FAF TO MAP1 4.0)	3:00	2:24	2:00	1:43	1:30	

DASA / SECCION AIS-MAP