

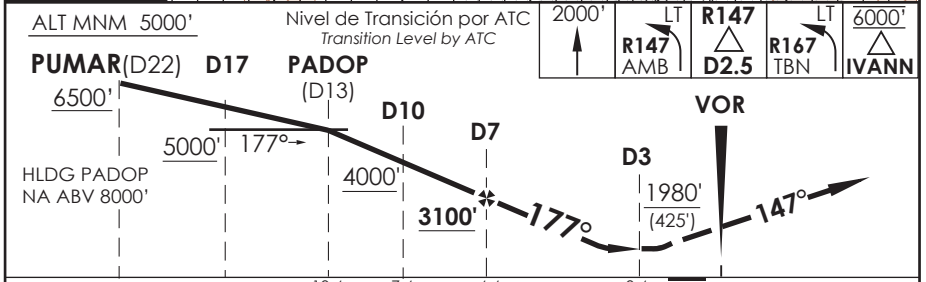
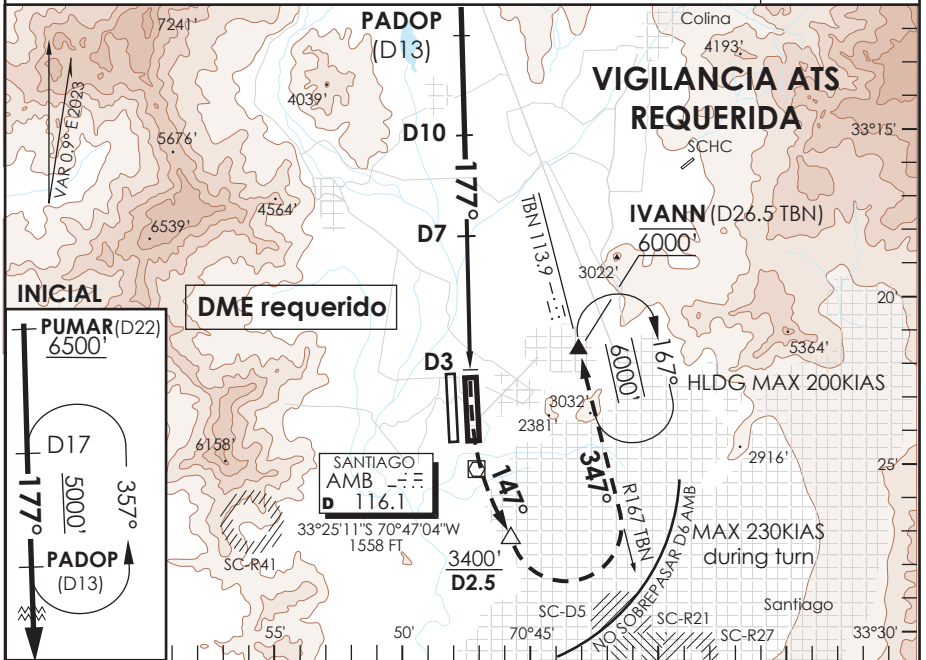
AP. ARTURO MERINO BENITEZ  
**SANTIAGO - CHILE**

SCEL IAC 7  
**VOR Rwy 17L**

ATIS 132.1	SANTIAGO RADAR Santiago Radar 119.7/129.7	TORRE SANTIAGO Santiago Tower 118.1/118.35	CONTROL TERRESTRE Ground Control GNDC W 122.5 GNDC E 122.2/122.6
VOR AMB <b>116.1</b>	FINAL APCH CRS <b>177°</b>	MNM ALT D7 <b>3100'</b>	MDA (H) <b>1980' (425')</b>
AD Elev. <b>1555'</b> THR 17L Elev. <b>1550'</b>			19000 FT

APCH FRUSTRADA: ASC 2000' para interceptar R147 AMB hasta D2.5, viraje izquierda para interceptar R167 TBN DCT IVANN 6000', luego según AUTH ATC \*.  
 Missed Apch: Climb to 2000' to intercept R147 AMB until D2.5, left turn to intercept R167 TBN DCT IVANN 6000', then according ATC clearance\*.

MSA 25 NM AMB



C A B C D	DIRECTO RWY 17L Straight in RWY 17L		CIRCULANDO Circling	ALTN Alternate Minimums
	MDA <b>1980' (425')</b>			
	ALSF-2	WO ALSF-2	NA	VER PAG. GEN 2.19 See page GEN 2.19
A	1.2 Km	1.6 Km		
B	1.6 Km	2.2 Km		
D	2.0 Km	2.4 Km		

\*MNM razón ASC APCH Frustrada: 300 FT/NM hasta 6000'

Veloc. Terrestre Kts	80	100	120	140	160
Angulo DES 3.2° FPM	453'	566'	679'	793'	906'
MIN:SEC (FAF TO MAP1 4.0)	3:00	2:24	2:00	1:43	1:30

CAMBIO: FREQ GNDC W  
 Change: GNDC W FREQ

DGAC AMDT 99

15 MAYO 2025

DASA / SECCION AIS-WAP