

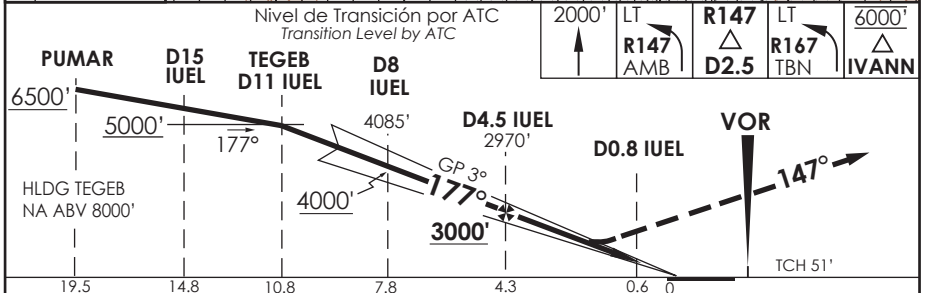
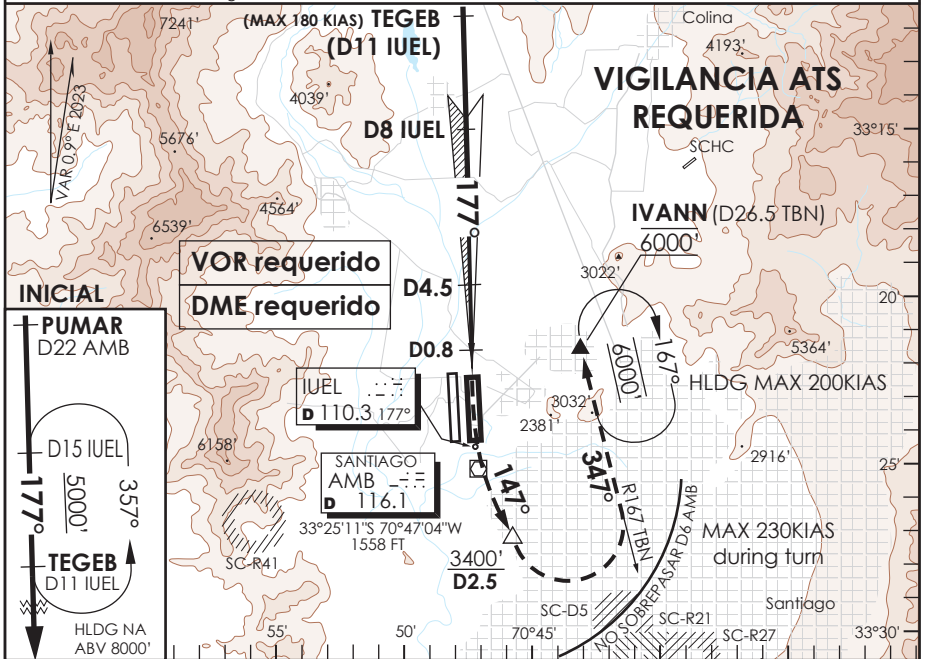
SANTIAGO - CHILE

ILS X o LOC X Rwy 17L

ATIS 132.1	SANTIAGO RADAR Santiago Radar 119.7/129.7	TORRE SANTIAGO Santiago Tower 118.1/118.35	CONTROL TERRESTRE Ground Control GNDC W 122.5 GNDC E 122.2/122.6	
LOC IUEL 110.3	FINAL APCH CRS 177°	GP D4.5 IUEL 3000'	ILS DA (H) 1960'(410')	AD Elev. 1555' THR 17L Elev. 1550'

APCH FRUSTRADA: ASC 2000' para interceptar R147 AMB hasta D2.5, viraje izquierda interceptar R167 TBN DCT IVANN 6000', luego según AUTH ATC. *
Missed Apch: Climb to 2000' to intercept R147 AMB until D2.5, left turn to intercept R167 TBN DCT IVANN 6000', then according ATC clearance. *

19000 FT
MSA 25 NM AMB



CATEGORIA	DIRECTO RWY 17L <i>Straight in RWY 17L **</i>				CIRCULANDO Circling	ALTN Alternate Minimums
	ILS DA 1960' (410')		LOC MDA 1980' (430')			
	ALSF-2	WO ALSF-2	ALSF-2	WO ALSF-2		
A			1.2 Km	1.6 Km	NA	VER PAG. GEN 2.19 See page GEN 2.19
B	1.2 Km	2.1 Km				
C			1.3 Km	2.2 Km		
D						

* MNM razón ASC APCH Frustrada: 320FT/NM hasta 6000'
Missed APCH MNM climb rate: 320 FT/NM to 6000'

Simultaneous APCH AUTH (LOC NA).
ATS surveillance RQRD. 5 Km VIS and ceil 5000 FT RQRD.

Veloc. Terrestre Kts	80	100	120	140	160
GP 3° FPM	425'	531'	637'	743'	849'

** WO IUEL DME PROC NA
PROCEDURE NA WITHOUT IUEL DME