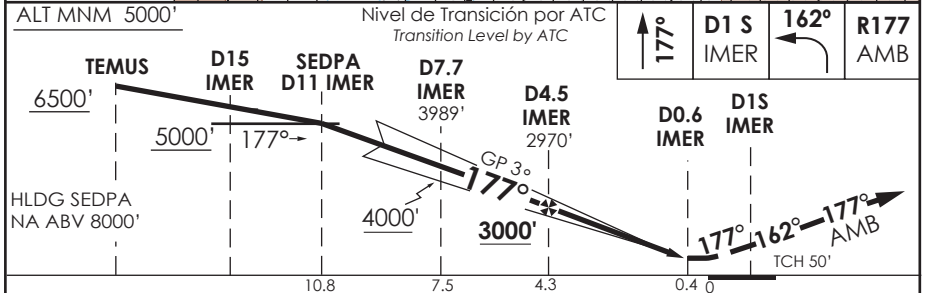
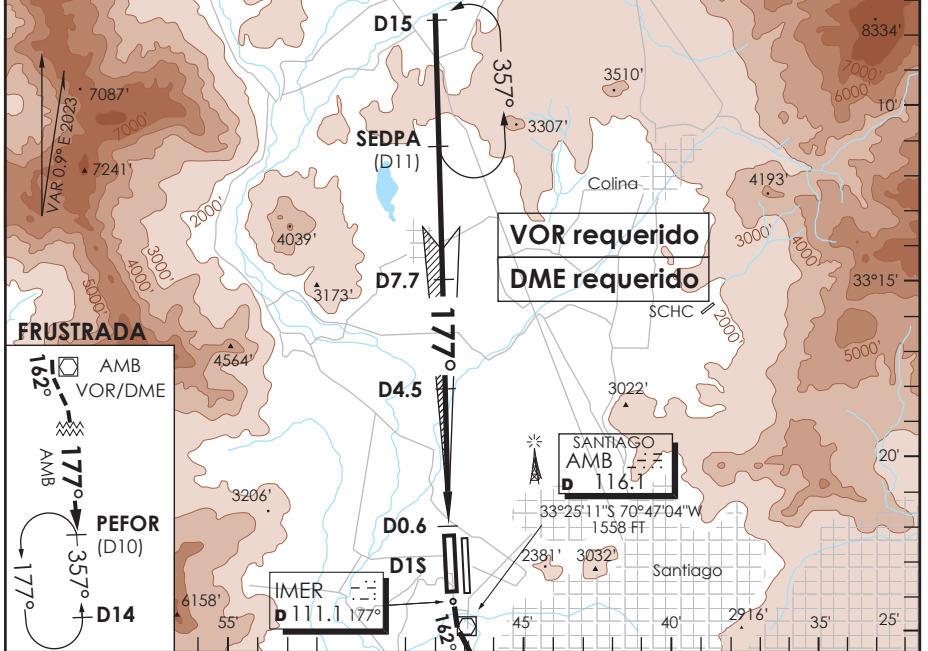


**SANTIAGO - CHILE**

**ILS Y o LOC Y Rwy 17R**

ATIS 132.1	SANTIAGO RADAR Santiago Radar 119.7/129.7	TORRE SANTIAGO Santiago Tower 118.1/118.35	CONTROL TERRESTRE Ground Control GNDC W 122.5 GNDC E 122.2/122.6
LOC IMER <b>111.1</b>	FINAL APCH CRS <b>177</b>	GS D4.5 <b>3000'</b>	ILS DA (H) <b>1751'(200')</b>
AD Elev. <b>1555'</b> THR 17R Elev. <b>1551'</b>			19000 FT
APCH FRUSTRADA: Ascenso HDG 177° hasta D15 IMER, viñe HDG 162° para interceptar R177 AMB VOR en ascenso a 5000' directo PEFOR, ingrese HLDG 357° izquierdo o según autorización ATC. Missed Apch: Climb on HDG 177° until D15 IMER, turn to HDG 162° to intercept R177 AMB VOR climbing to 5000' direct to PEFOR, enter on HLDG 357° left or according to ATC clearance.			
			MSA 25 NM AMB



DESCRIPCION	DIRECTO RWY 17R Straight in RWY 17R **				CIRCULANDO Circling	ALTN Alternate Minimums
	ILS DA 1751' (200')		LOC 1980' (429')			
	ALSF-2	WO ALSF-2	ALSF-2	WO ALSF-2		
	TDZL y RCCL	WO TDZL o RCCL	ALSF-2	WO ALSF-2		
A	RVR 550m	RVR 550m*	1.2 Km	1.6 Km	NA	VER PAG. GEN 2.19 See page GEN 2.19
B	o	o	1.6 Km	2.0 Km		
C	0.8 Km	RVR 750m	2.0 Km	2.4 Km		
D	o	o				

\* Ver página GEN 2.11 See page GEN 2.11      \*\* WO IMER DME PROC NA Procedure not authorized without IMER DME

Veloc. Terrestre Kts	80	100	120	140	160
GP 3° FPM	425'	531'	637'	743'	849'
MIN:SEC (FAF TO MAP1 3.9)	2:55	2:20	1:57	1:40	1:28