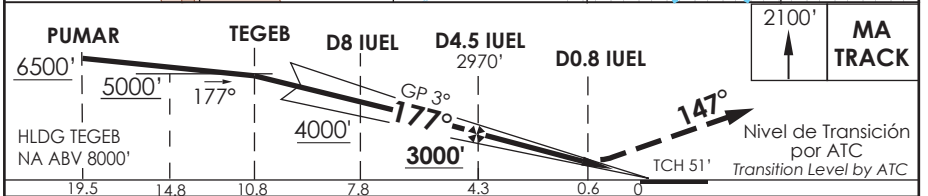
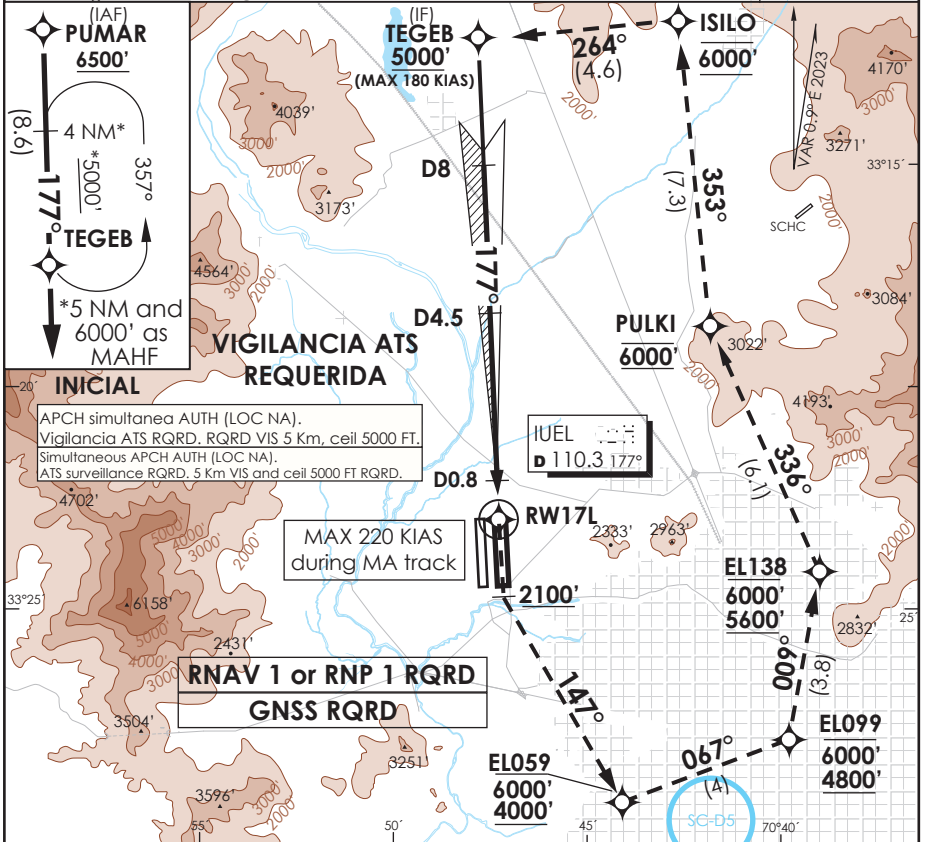


**SANTIAGO - CHILE**

**ILS T o LOC T Rwy 17L**

ATIS 132.1	SANTIAGO RADAR Santiago Radar 119.7/129.7	TORRE SANTIAGO Santiago Tower 118.1/118.35	CONTROL TERRESTRE GNDC W 122.5 GNDC E 122.2/122.6
LOC IUEL <b>110.3</b>	FINAL APCH CRS <b>177°</b>	GP D4.5 IUEL <b>3000'</b>	ILS DA (H) <b>1750'(200')</b>
AD Elev. <b>1555'</b> THR 17L Elev. <b>1550'</b>			19000 FT
APCH FRUSTRADA: ASC 2100' viraje izquierda para continuar via RNAV MA TR to TEGEB 6000', luego según autorización ATC . Ⓞ Missed Apch: Climb to 2100' left turn to continue via RNAV MA TR to TEGEB 6000', then according ATC clearance. Ⓞ			
MSA 25 NM AMB			



C A T	DIRECTO RWY 17L Straight in RWY 17L **					CIRCULANDO Circling	ALTN Alternate Minimums
	ILS DA 1750' (200')		LOC MDA 1980' (430')				
A	ALSF-2		ALSF-2			NA	VER PAG. See page GEN 2.19
B	RVR 550m	RVR 550m*	1.2 Km	1.2 Km	1.6 Km		
C	0.8 Km	0.8 Km		1.6 Km	2.0 Km		
D	0.8 Km	0.8 Km		2.0 Km	2.4 Km		
* Ver página GEN 2.11 See page GEN 2.11		Ⓞ MNM razón ASC APCH Frustrada: 320FT/NM hasta 6000' Missed APCH MNM climb rate: 320 FT/NM to 6000'					
Veloc. Terrestre Kts		80	100	120	140	160	** WO IUEL DME PROC NA PROCEDURE NA WITHOUT IUEL DME
GP 3° FPM		425'	531'	637'	743'	849'	
MIN:SEC (FAF TO MAP)							

DASA / SECCION AS-MAP