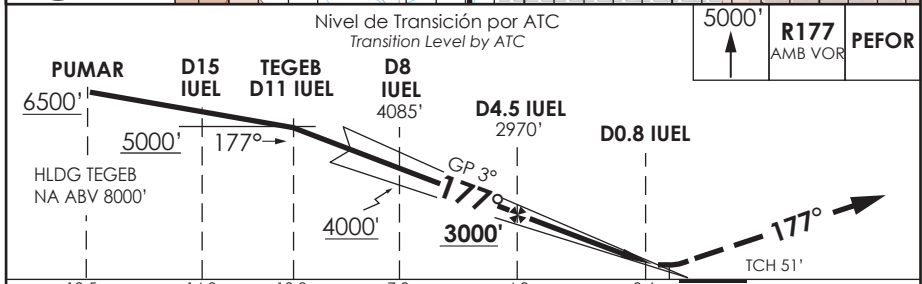
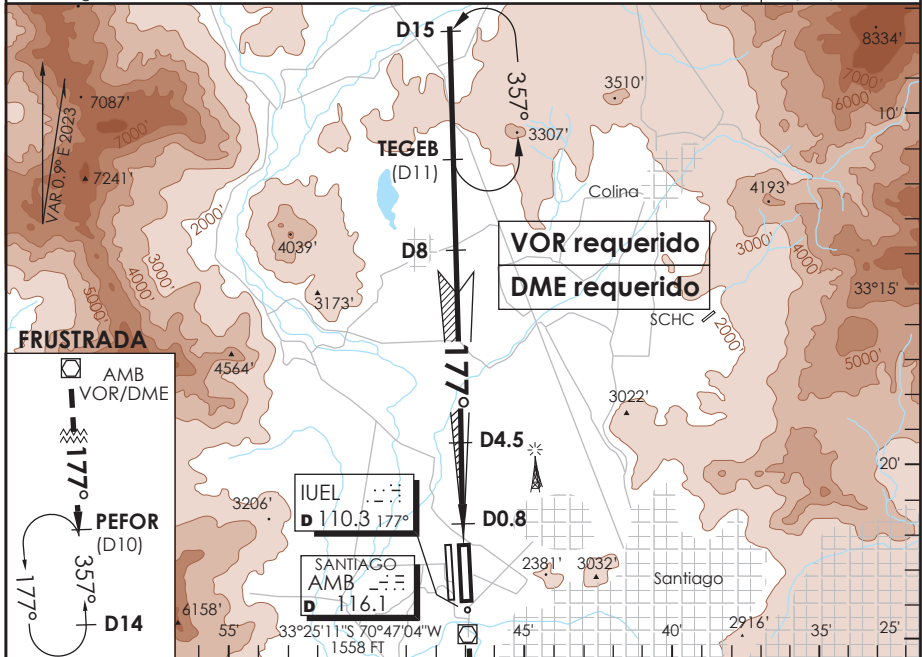


ATIS SANTIAGO RADAR 132.1 Santiago Radar 119.7/129.7		TORRE SANTIAGO Santiago Tower 118.1/118.35		CONTROL TERRESTRE Ground Control GNDC W 122.5 GNDC E 122.2/122.6	
LOC IUEL 110.3	FINAL APCH CRS 177°	GP D4.5 IUEL 3000'	ILS DA (H) 1750' (200')	AD Elev. 1555' THR 17L Elev. 1550'	
APCH FRUSTRADA: Ascenso a 5000' R177 VOR AMB directo PEFOR, ingrese HLDG 357° izquierdo o según autorización ATC. Missed Apch: Climb to 5000' on R177 AMB VOR direct to PEFOR, enter on HLDG 357° left or according to ATC clearance.					MSA 25 NM AMB



DIRECTO RWY 17L Straight in RWY 17L ** ILS DA 1750' (200') ALSF-2		LOC 1980' (430') MDA 1980' (430') ALSF-2		CIRCULANDO Circling	ALTN Alternate Minimums
TDZL y RCLL WO TDZL o RCLL WO ALSF-2		ALSF-2 WO ALSF-2			
A	RVR 550m	RVR 550m*	1.2 Km	1.6 Km	NA VER PAG. GEN 2.19 See page GEN 2.19
B	o RVR 750m	o RVR 750m	1.6 Km	2.0 Km	
C	o 0.8 Km	o 0.8 Km	2.0 Km	2.4 Km	
D					

* Ver página GEN 2.11 See page GEN 2.11 ** WO IUEL DME PROC NA PROCEDURE NOT AUTHORIZED WITHOUT IUEL DME

Veloc. Terrestre Kts	80	100	120	140	160
GP 3° FPM	425'	531'	637'	743'	849'
MIN.SEC (FAF TO MAP1 3.8)	2:51	2:17	1:54	1:38	1:26