

AP. ARTURO MERINO BENITEZ SANTIAGO - CHILE

SCEL IAC 26
RNP T RWY 19 (AR)

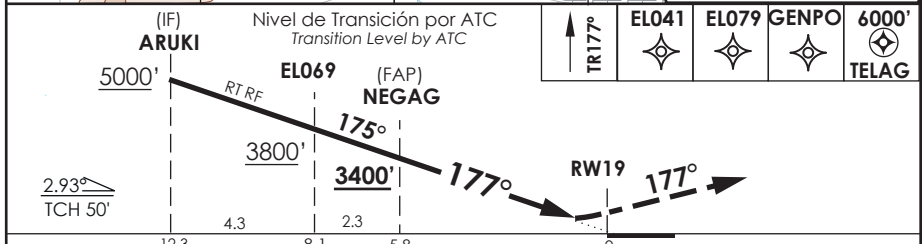
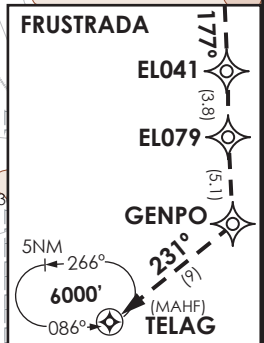
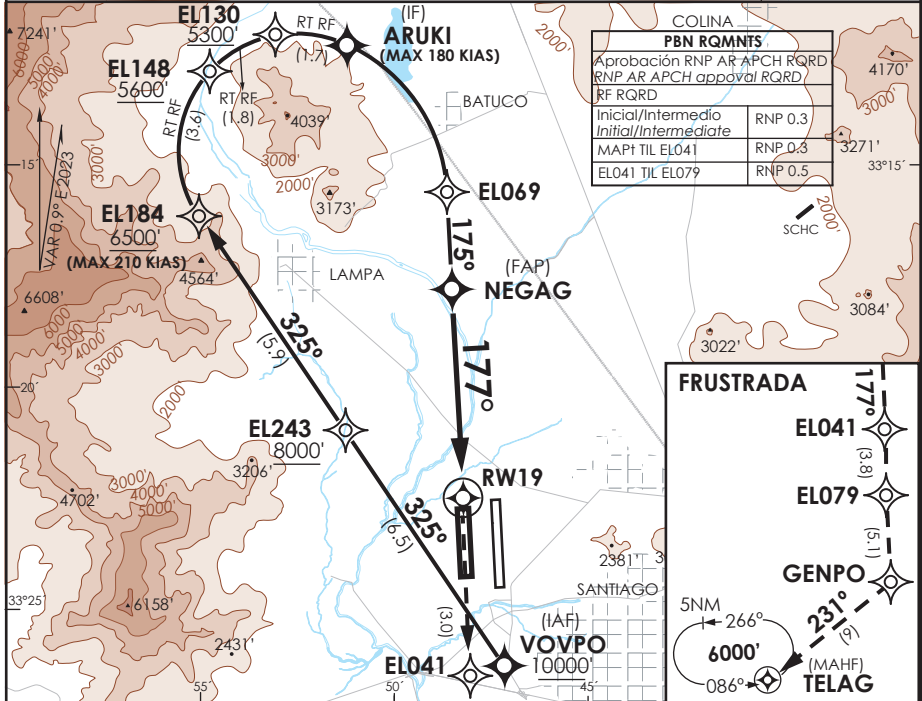
ATIS 132.1	SANTIAGO RADAR Santiago Radar 119.7/129.7	TORRE SANTIAGO Santiago Tower 118.1/118.35	CONTROL TERRESTRE Ground Control GNDC W 122.5/122.6 GNDC E 122.2/122.6
---------------	--	---	---

RNP	FINAL APCH CRS 177°	MNM ALT NEGAG 3400'	DA/H ver mínimos DA/H refer to minimums	AD Elev. 1555' THR 19 Elev. 1550'	 <p>19000 FT</p>
-----	-------------------------------	-------------------------------	--	--	---

APCH FRUSTRADA: Ascenso en TR177° hacia ELO41- ELO79 - GENPO - TELAG 6000',
Ingreso HLDG 086° izquierdo o según autorización ATC.
Missed Apch: Climb on TR177° to ELO41- ELO79 - GENPO - TELAG 6000', enter on HLDG 086° left or according to ATC clearance.

APCH simultanea AUTH RQRD VIS 5 Km, ceil 5000 FT
Simultaneous APCH authorized 5 Km VIS and ceil 5000 FT RQRD

MSA 25 NM RW19



DIRECTO RWY 19 / Straight in RWY 19		RNP AR RWY 19 SCEL: PROC NA BLW -5°C ó ABV 40°C.
CAT	RNP 0.15 DA 1840' (290')	
A	1.6 Km	MNM ALTN RNP 0.3: VER PAG GEN 2.19 See pag 2.19
B		
C		
D		

Veloc. Terrestre Kts	80	100	120	140	160	RQR AUTORIZACIÓN ESPECIAL PARA ACFT Y CREW SPECIAL ACFT AND AIRCREW AUTHORIZATION RQRD
Angulo DES 2.93° FPM	415'	518'	622'	726'	829'	
MAPt en DA						

PASA / SECCION AIC.MAP