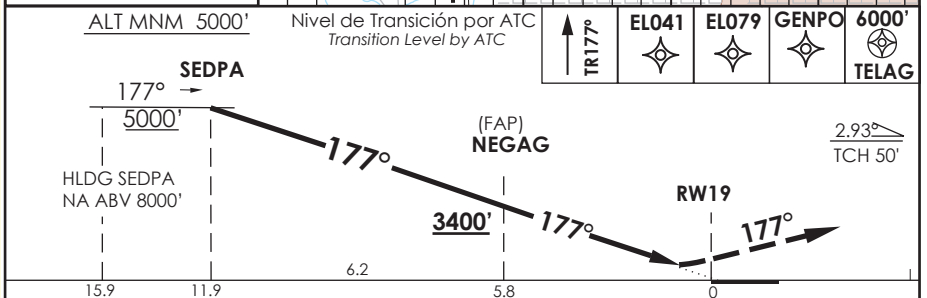
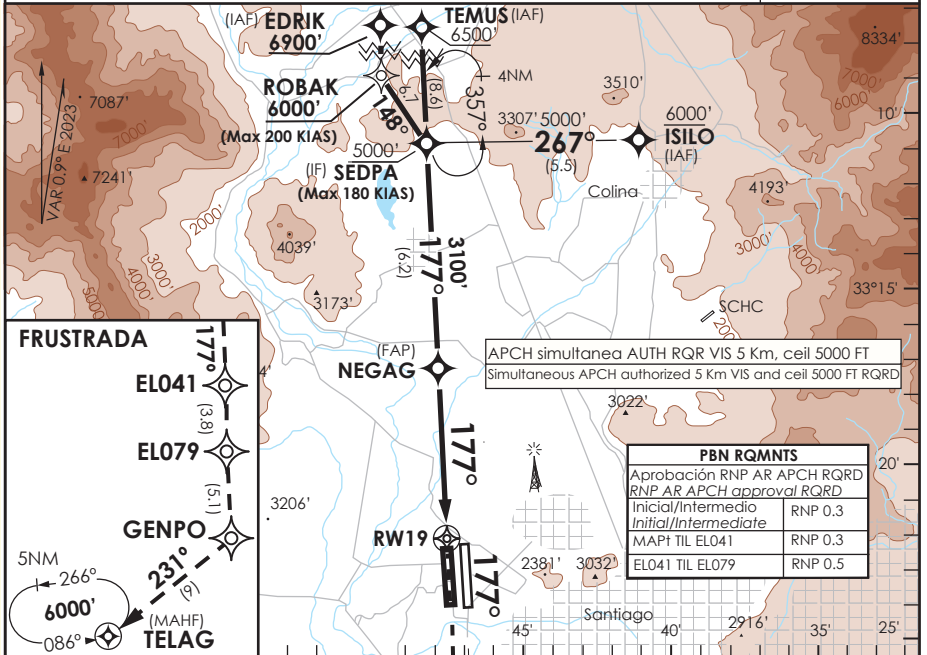


**SANTIAGO - CHILE**

**RNP X RWY 19 (AR)**

ATIS 132.1	SANTIAGO RADAR Santiago Radar 119.7/129.7	TORRE SANTIAGO Santiago Tower 118.1/118.35	CONTROL TERRESTRE Ground Control GNDC W 122.5/122.6 GNDC E 122.2/122.6
<b>RNP</b>	FINAL APCH CRS <b>177°</b>	MNM ALT NEGAG <b>3400'</b>	DA/H ver mínimos DA/H refer to minimums
			AD Elev. <b>1555'</b> THR 19 Elev. <b>1550'</b>
APCH FRUSTRADA: Ascenso en TR177° hacia EL041 - EL079 - GENPO - TELAG 6000', ingrese HLDG 086° izquierdo o según autorización ATC. Missed Apch: Climb on TR177° to EL041 - EL079 - GENPO - TELAG 6000', enter on HLDG 086° left or according to ATC clearance.			19000 FT
			MSA 25 NM RW19



C A T E G O R I A	DIRECTO RWY 19 / Straight in RWY 19		RNP AR RWY 19 SCEL: PROC NA BLW -5°C ó ABV 40°C.				
	RNP 0.15 DA 1840' (290')	RNP 0.3 DA 1890' (340')					
A	1.6 Km		MNM ALTN RNP 0.3: VER PAG GEN 2.19 See pag 2.19				
B							
C							
D							
Veloc. Terrestre Kts		80	100	120	140	160	RQR AUTORIZACIÓN ESPECIAL PARA ACFT Y CREW SPECIAL ACFT AND AIRCREW AUTHORIZATION RQRD
Angulo DES 2.93° FPM		415'	518'	622'	726'	829'	
MAPt en DA							