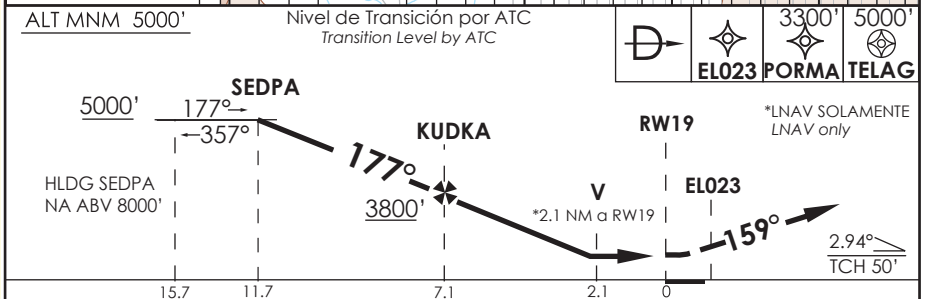
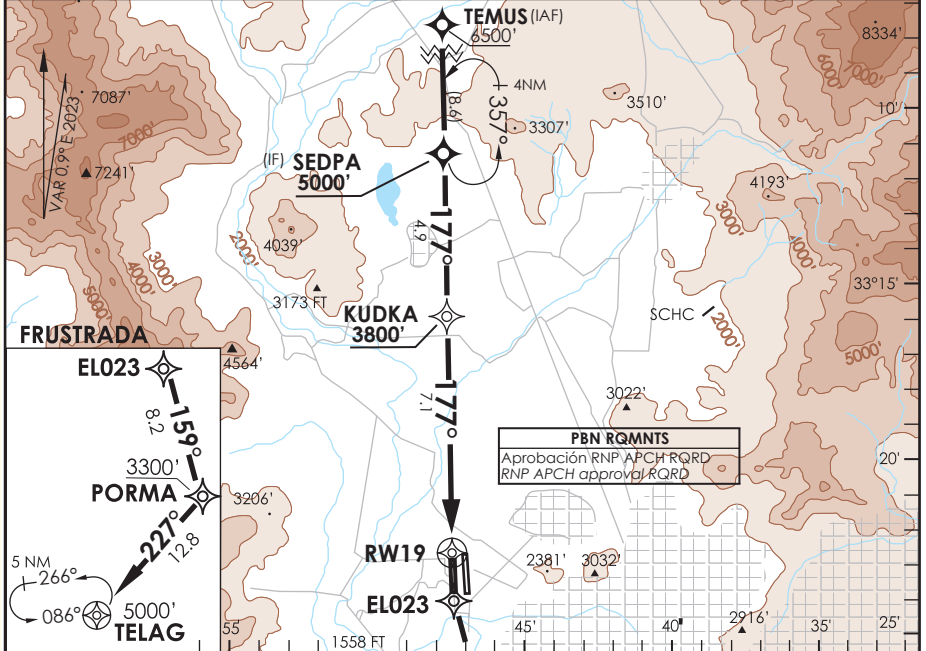


AP. ARTURO MERINO BENITEZ
SANTIAGO - CHILE

SCEL IAC 24
RNP Y RWY 19

ATIS 132.1	SANTIAGO RADAR Santiago Radar 119.7/129.7	TORRE SANTIAGO Santiago Tower 118.1/118.35	CONTROL TERRESTRE Ground Control GNDC W 122.5/122.6 GNDC E 122.2/122.6
RNP	FINAL APCH CRS 177°	MNM ALT KUDKA 3800'	LNAV/VNAV DA(H) 1900' (350')
AD Elev. 1555' THR 19 Elev. 1550'			19000 FT
APCH FRUSTRADA: Ascenso directo EL023 - PORMA - TELAG 5000', ingreso HLDG 086° izquierdo o según autorización ATC.			
Missed Apch: Climb direct to EL023 - PORMA - TELAG 5000', enter on HLDG 086° left or according to ATC clearance.			
MSA 25 NM RW19			



CATEGORÍA	DIRECTO RWY 19 Straight in RWY 19		CIRCULANDO Circling	ALTN Alternate Minimums
	LNAV/VNAV DA 1900' (350')	LNAV MDA 2300' (750')		
A	1.6 Km	1.6 Km	NA	VER PAG. GEN 2.19 See page GEN 2.19
B				
C				
D				

PROC BARO-VNAV NA BLW -5°C ó ABV 45°C

Veloc. Terrestre Kts	80	100	120	140	160
Angulo DES 2,94° FPM	410'	520'	620'	720'	880'
MAPt en RW19					

DASA / SECCION AS-MAP