

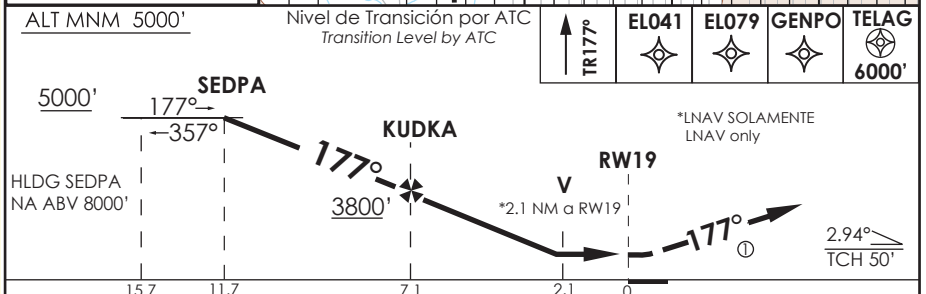
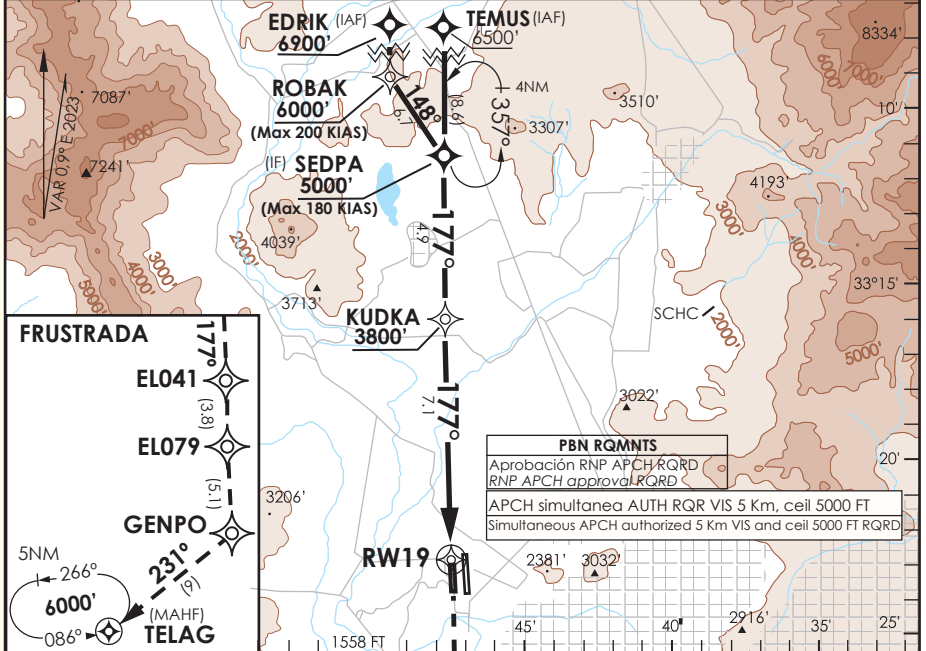
AP. ARTURO MERINO BENITEZ
SANTIAGO - CHILE

SCEL IAC 23
RNP Z RWY 19

| | | | |
|---------------|--|---|--|
| ATIS 132.1 | SANTIAGO RADAR Santiago Radar 119.7/129.7 | TORRE SANTIAGO Santiago Tower 118.1/118.35 | CONTROL TERRESTRE Ground Control GNDC W 122.5/122.6 GNDC E 122.2/122.6 |
| RNP | FINAL APCH CRS 177° | MNM ALT KUDKA 3800' | LNAV/VNAV DA(H) 1900' (350') |
| | | | AD Elev. 1555' THR 19 Elev. 1550' |

APCH FRUSTRADA: Ascenso en TR177° hacia EL041 - EL079 - GENPO - TELAG 6000', ingrese HLDG 086° izquierdo o según autorización ATC. Ⓣ
 Missed Apch: Climb on TR177° to EL041-EL079-GENPO-TELAG 6000', enter on HLDG 086° left or according to ATC clearance. Ⓣ

MSA 25 NM RW19



| | | | | |
|-----------|------------------------------------|-----------------------|------------------------|--|
| CATEGORIA | DIRECTO RWY 19 /Straight in RWY 19 | | CIRCULANDO Circling | ALTN Alternate Minimums |
| | LNAV/VNAV DA 1900' (350') | LNAV MDA 2300' (750') | | |
| A | 1.6 KM | | NA | VER PAG. GEN 2.19 See page GEN 2.19 |
| B | | | | |
| C | | | | |
| D | | | | |

PROC BARO-VNAV NA BLW -5°C ó ABV 45°C

| | | | | | |
|----------------------|------|------|------|------|------|
| Veloc. Terrestre Kts | 80 | 100 | 120 | 140 | 160 |
| Angulo DES 2.94° FPM | 416' | 520' | 624' | 728' | 832' |
| MAPT en RW19 | | | | | |

Ⓣ MNM razón ASC APCH Frustrada: 330 FT/NM hasta 4000'
 Missed APCH MNM climb rate: 330 FT/NM to 4000'

DATA /SECCION AS-MAP