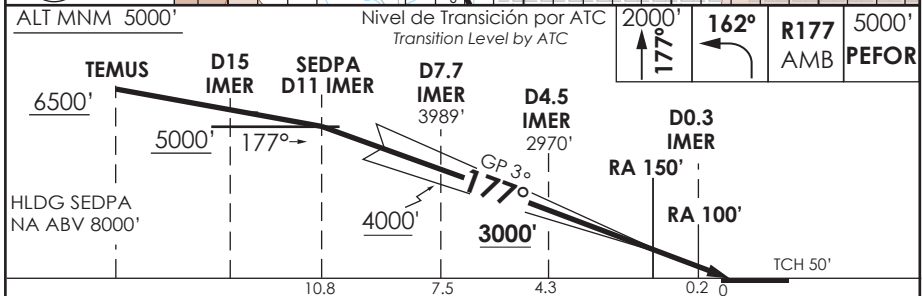
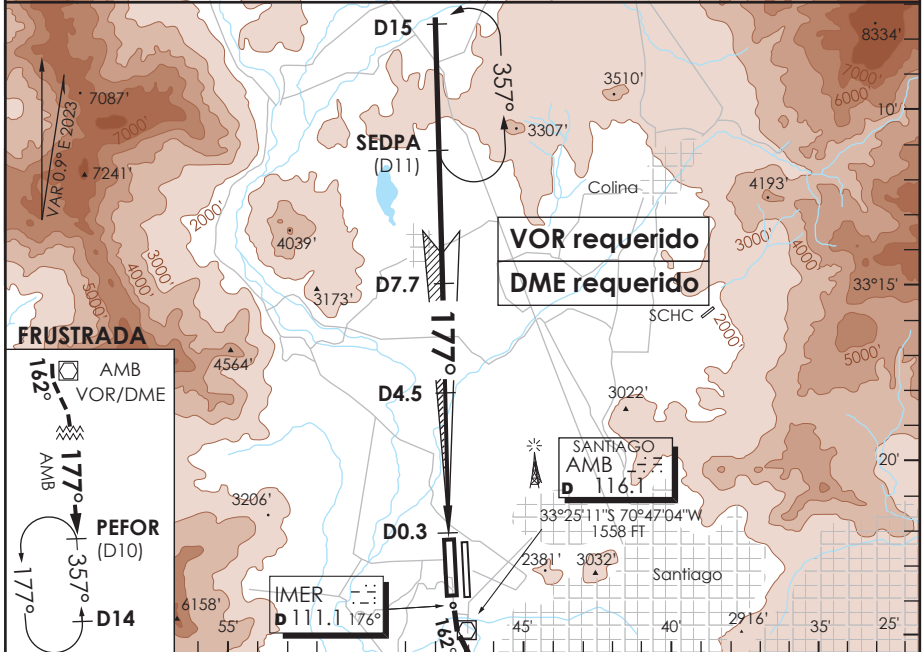


AP. ARTURO MERINO BENITEZ
SANTIAGO - CHILE

SCEL IAC 2
ILS Z Rwy 17R

ATIS 132.1	SANTIAGO RADAR Santiago Radar 119.7/129.7	TORRE SANTIAGO Santiago Tower 118.1/118.35	CONTROL TERRESTRE Ground Control GNDC W 122.5 GNDC E 122.2/122.6
LOC IMER 111.1	FINAL APCH CRS 177	GS D4.5 3000'	CAT II & IIIA/B De acuerdo a CAT According to CAT AD Elev. 1555' THR 17R Elev. 1551'
APCH FRUSTRADA: Ascenso HDG 177° hasta 2000 FT, vire HDG 162° para interceptar R177 AMB VOR en ascenso a 5000' directo PEFOR, ingrese HLDG 357° izquierdo o según autorización ATC. Missed Apch: Climb on HDG 177° until 2000 FT, turn to HDG 162° to intercept R177 AMB VOR climbing to 5000' direct to PEFOR, enter on HLDG 357° left or according to ATC clearance.			19000 FT
			MSA 25 NM AMB



C A B C D	DIRECTO RWY 17R Straight in RWY 17R **				* Aeronaves operando "FAIL PASSIVE" DA(H) 1600' (50 FT) * Aircraft operating "FAIL PASSIVE" DA(H) 1600' (50 FT)
	ILS CAT III-B	ILS CAT III-A	ILS CAT II		
	*	*	RA 100' DA 1651'(100')	RA 150' DA 1701'(150')	
	RVR 50m	RVR 200m	RVR 350m	RVR 500m	
Se requiere certificación de ACFT y Habilitación de Tripulación Especial : DAN 06-02, 06-12 Special Aircraft and Aircrew certification required: DAN 06-02, 06-12					
Veloc. Terrestre Kts	80	100	120	140	160
GP 3° FPM	425'	531'	637'	743'	849'
				** WO IMER DME PROC NA PROC NA WITHOUT IMER DME	

DASA / SECCION AIS-MAP