

**SANTIAGO - CHILE**

**RNP T RWY 17R (AR)**

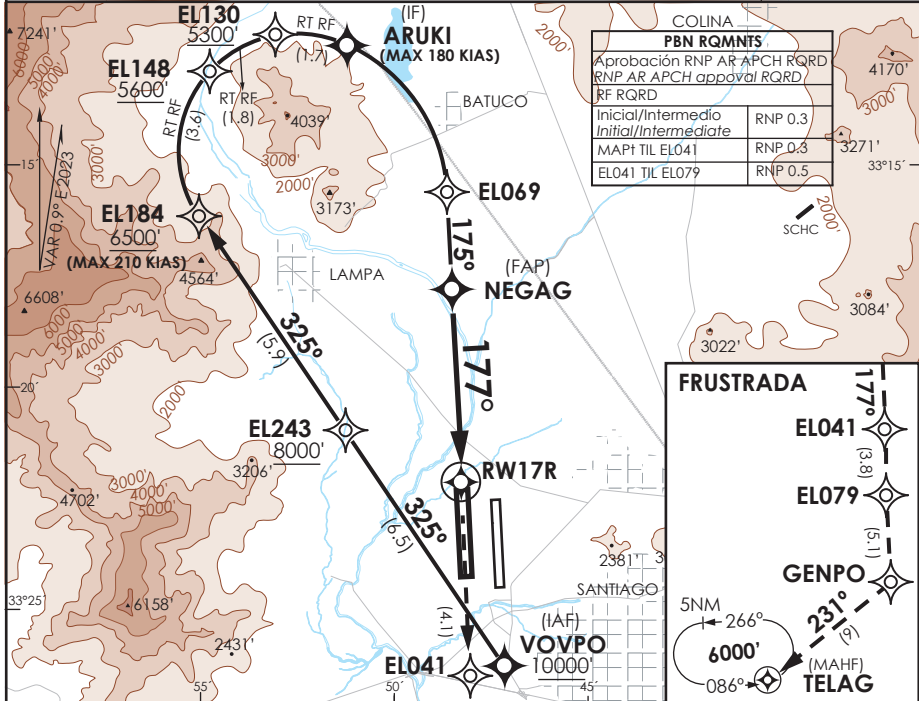
ATIS 132.1	SANTIAGO RADAR Santiago Radar 119.7/129.7	TORRE SANTIAGO Santiago Tower 118.1/118.35	CONTROL TERRESTRE Ground Control GNDC W 122.5/122.6 GNDC E 122.2/122.6
---------------	--	---	---

<b>RNP</b>	FINAL APCH CRS <b>177°</b>	MNM ALT NEGAG <b>3100'</b>	DA/H ver mínimos DA/H refer to minimums	AD Elev. <b>1555'</b> THR 17R Elev. <b>1551'</b>
------------	-------------------------------	-------------------------------	--	---

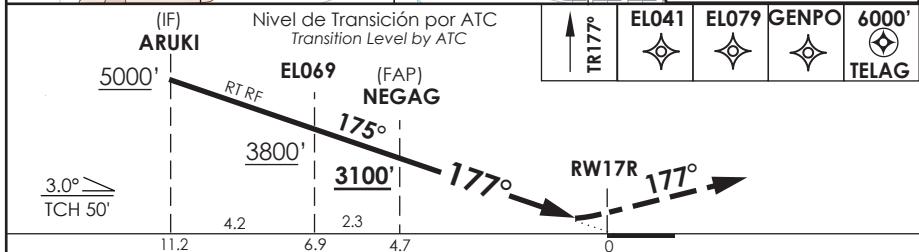
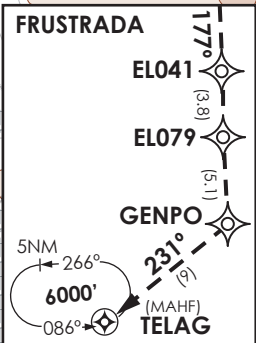
APCH FRUSTRADA: Ascenso en TR177° hacia ELO41- ELO79 - GENPO - TELAG 6000',  
 Ingrese HLDG 086° izquierdo o según autorización ATC.  
 Missed Apch: Climb on TR177° to ELO41- ELO79 - GENPO - TELAG 6000', enter on HLDG 086° left or  
 according to ATC clearance.

MSA 25 NM RW17R

APCH simultanea AUTH RQRD VIS 5 Km, ceil 5000 FT  
 Simultaneous APCH authorized 5 Km VIS and ceil 5000 FT RQRD



PBN RQMNTS	
Aprobación RNP AR APCH RQRD RNP AR APCH approval RQRD	
RF RQRD	
Inicial/Intermedio Initial/Intermediate	RNP 0.3
MAP1 TIL ELO41	RNP 0.3
ELO41 TIL ELO79	RNP 0.5



DIRECTO RWY 17R / Straight in RWY 17R				RNP AR RWY 17R SCEL:		
C A T	RNP 0.15 DA 1820' (269')		RNP 0.3 DA 1870' (319')		PROC NA BLW -5°C ó ABV 40°C.	
	ALSF-2	WO ALSF-2	ALSF-2	WO ALSF-2		
A	0.8 Km	1.6 Km	0.8 Km	1.6 Km	MNM ALTN RNP 0.3: VER PAG GEN 2.19 See pag 2.19	
B						
C						
D						
Veloc. Terrestre Kts	80	100	120	140	160	RQR AUTORIZACIÓN ESPECIAL PARA ACFT Y CREW SPECIAL ACFT AND AIRCREW AUTHORIZATION RQRD
Angulo DES 3° FPM	425'	531'	637'	743'	849'	
MAPt en DA						

DASA / SECCION AIS-WAP