

SANTIAGO - CHILE

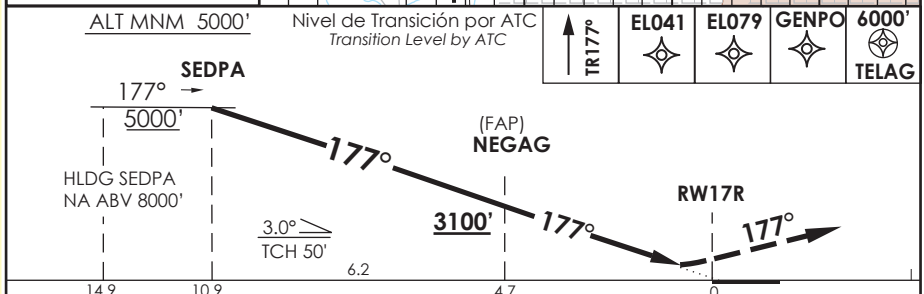
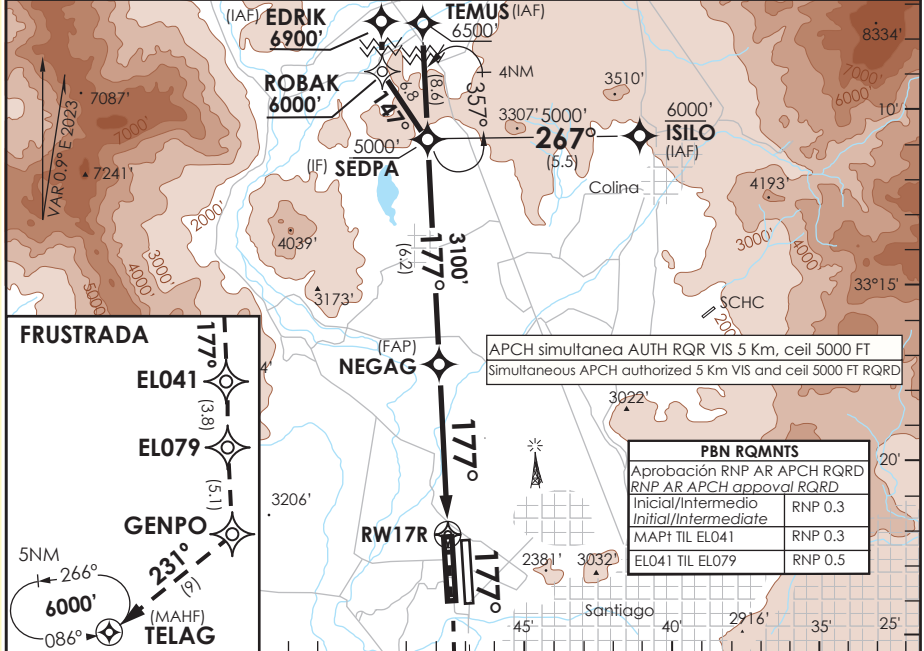
RNP X RWY 17R (AR)

ATIS 132.1	SANTIAGO RADAR Santiago Radar 119.7/129.7	TORRE SANTIAGO Santiago Tower 118.1/118.35	CONTROL TERRESTRE Ground Control GNDC W 122.5/122.6 GNDC E 122.2/122.6
---------------	--	---	--

RNP	FINAL APCH CRS 177°	MNM ALT NEGAG 3100'	DA/H ver mínimos DA/H refer to minimums	AD Elev. 1555' THR 17R Elev. 1551'	19000 FT
------------	-------------------------------	-------------------------------	--	---	----------

APCH FRUSTRADA: Ascenso en TR177° hacia EL041 - EL079 - GENPO - TELAG 6000', ingrese HLDG 086° izquierdo o según autorización ATC.
 Missed Apch: Climb on TR177° to EL041- EL079 - GENPO - TELAG 6000', enter on HLDG 086° left or according to ATC clearance.

MSA 25 NM RW17R



CATEGORIA	DIRECTO RWY 17R / Straight in RWY 17R				RNP AR RWY 17R SCEL: PROC NA BLW -5°C ó ABV 40°C.		
	RNP 0.15 DA 1820' (269')		RNP 0.3 DA 1870' (319')		MNM ALTN RNP 0.3: VER PAG GEN 2.19 See pag 2.19		
	ALSF-2	WO ALSF-2	ALSF-2	WO ALSF-2			
A	0.8 Km	1.6 Km	0.8 Km	1.6 Km			
B							
C							
D							
Veloc. Terrestre Kts		80	100	120	140	160	RQR AUTORIZACIÓN ESPECIAL PARA ACFT Y CREW SPECIAL ACFT AND AIRCREW AUTHORIZATION RQRD
Angulo DES 3° FPM		425'	531'	637'	743'	849'	
MAPt en DA							

DASA / SECCION AS-MAP