

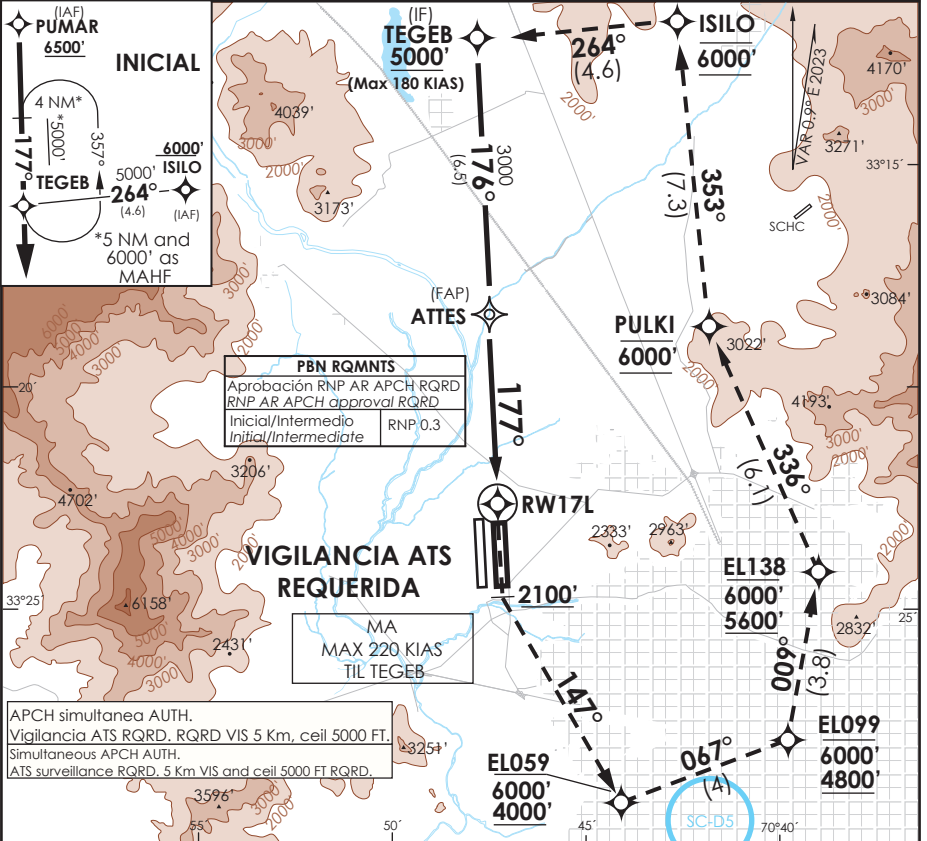
**SANTIAGO - CHILE**

**RNP X RWY 17L (AR)**

ATIS 132.1	SANTIAGO RADAR Santiago Radar 119.7/129.7	TORRE SANTIAGO Santiago Tower 118.1/118.35	CONTROL TERRESTRE GND C W 122.5	Ground Control E 122.2/122.6
---------------	--	---	------------------------------------	---------------------------------

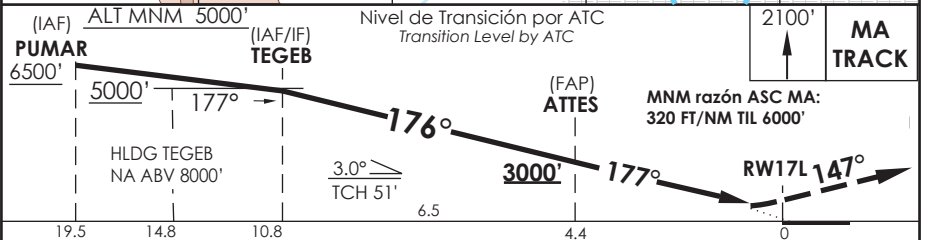
<b>RNP</b>	FINAL APCH CRS <b>177°</b>	MNM ALT ATTES <b>3000'</b>	DA/H ver mínimos DA/H refer to minimums	AD Elev. 1555' THR 17L Elev. 1550'	 <p>19000 FT MSA 25 NM RW17L</p>
------------	-------------------------------	-------------------------------	--	---------------------------------------	---

APCH FRUSTRADA: ASC 2100' viraje izquierda para continuar via RNAV MA TR to TEGEB 6000', luego según AUTH ATC.  
 Missed Apch: Climb to 2100' left turn to continue via RNAV MA TR to TEGEB 6000', then according ATC clearance.



PBN RQMNTS	
Aprobación RNP AR APCH RQRD	
RNP AR APCH approval RQRD	
Inicial/Intermedio	RNP 0.3
Initial/Intermediate	

APCH simultanea AUTH.  
 Vigilancia ATS RQRD. RQRD VIS 5 Km, ceil 5000 FT.  
 Simultaneous APCH AUTH.  
 ATS surveillance RQRD. 5 Km VIS and ceil 5000 FT RQRD.



CAT	DIRECTO RWY 17L Straight in RWY 17L				RNP AR RWY 17L SCEL: Para sistemas BARO-VNAV no compensados PROC NA BLW -5°C ó ABV 40°C.
	RNP 0.15 DA 1830' (280')	RNP 0.3 DA 1880' (330')			
A	0.8 Km	1.6 Km	0.8 Km	1.6 Km	MNM ALTN RNP 0.3: VER PAG GEN 2.19 See pag 2.19
B					
C					
D					

Veloc. Terrestre Kts	80	100	120	140	160	RQR AUTORIZACIÓN ESPECIAL PARA ACFT Y TRIPULACIÓN SPECIAL ACFT AND AIRCREW AUTHORIZATION RQRD
Angulo DES 3° FPM	425'	531'	637'	743'	849'	

DASA / SECCION AIS-MAP