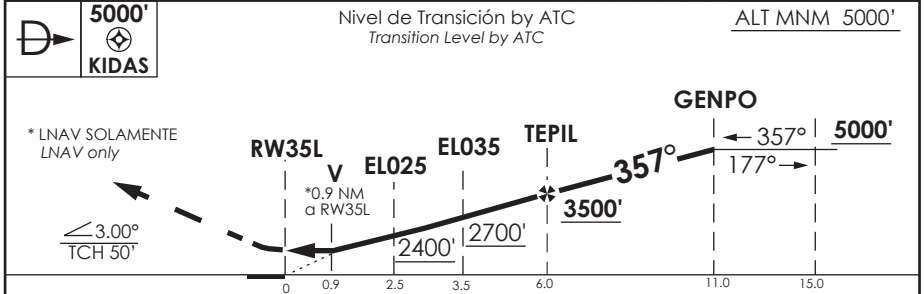
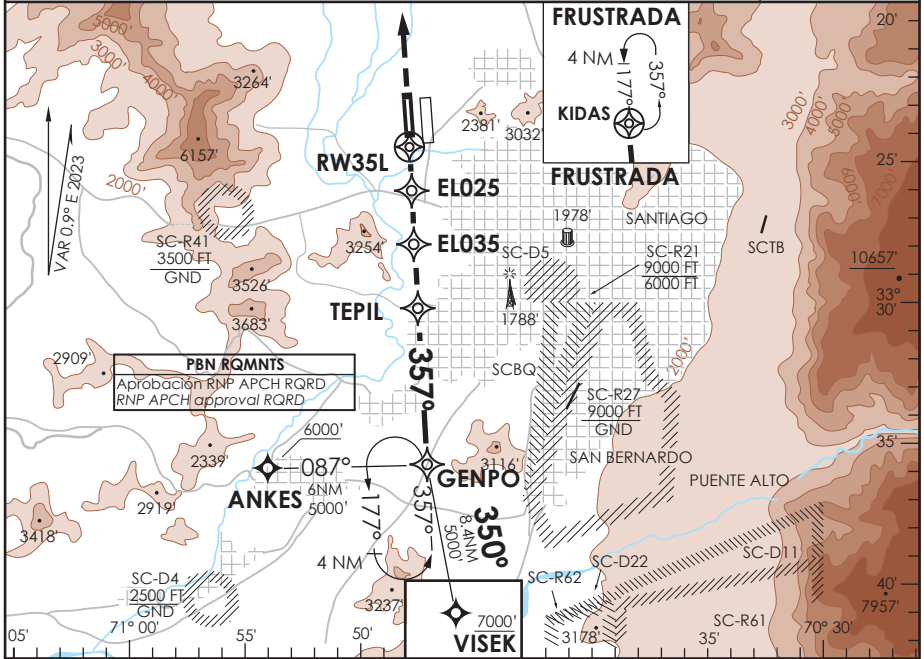


AP. ARTURO MERINO BENITEZ
SANTIAGO - CHILE

SC-EI IAC 15
RNP Rwy 35L

ATIS 132.1	SANTIAGO RADAR Santiago Radar 119.7/129.7	TORRE SANTIAGO Santiago Tower 118.1/118.35	CONTROL TERRESTRE GND C W 122.5 GND C E 122.2/122.6
RNP	FINAL APCH CRS 357°	MNM ALT TEPIL 3500'	LNAV/VNAV DA(H) 1800'(250')
APCH FRUSTRADA: Ascenso directo KIDAS a 5000', ingrese a HLDG 177° izquierdo o según autorización ATC. Missed Apch: Climb direct to KIDAS 5000', enter on HLDG 177° left or according to ATC clearance.			AD Elev. 1555' THR 35L Elev 1550'
			19000 FT
			MSA 25 NM RWY 35L



CATEGORIA	DIRECTO RWY 35L Straight in RWY 35L		CIRCULANDO Circling	ALTN Alternate Minimums
	LNAV / VNAV DA 1800'(250')	LNAV MDA 1900' (350')		
A	1.6 Km		NA	VER PAG. GEN 2.19 See page GEN 2.19
B				
C				
D				

Para sistemas BARO-VNAV no compensados PROC BARO-VNAV NA BLW -5°C ó ABV 45°C					
Veloc. Terrestre Kts	80	100	120	140	160
Angulo DES 3° FPM	425'	531'	637'	743'	849'
MAPt en RW35L					

DASA / SECCION AIS-WAP