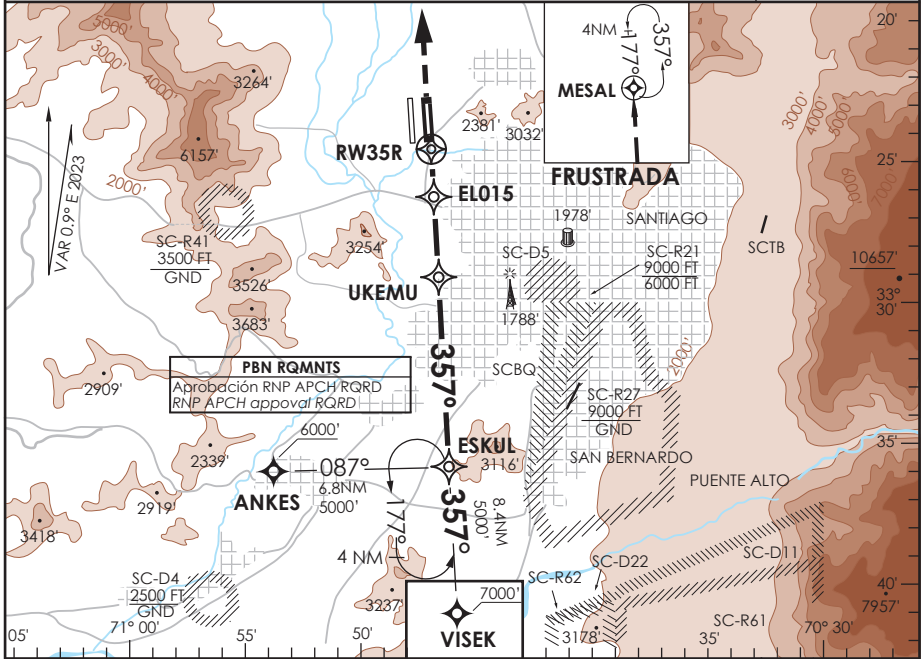
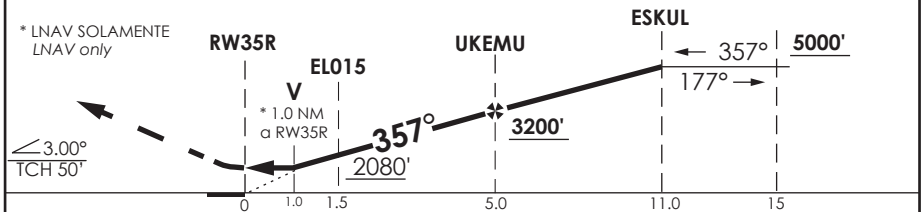


ATIS 132.1	SANTIAGO RADAR Santiago Radar 119.7/129.7	TORRE SANTIAGO Santiago Tower 118.1/118.35	CONTROL TERRESTRE Ground Control GNDC W 122.5 GNDC E 122.2/122.6
<b>RNP</b>	FINAL APCH CRS <b>357°</b>	MNM ALT UKEMU <b>3200'</b>	LNNAV/VNAV DA (H) <b>1840'(285')</b>
AD Elev. <b>1555'</b> THR 35R Elev. <b>1555'</b>			19000 FT
APCH FRUSTRADA: Ascenso directo MESAL 5000 ft, ingrese a HLDG 177° izquierdo o según autorización ATC.			
Missed Apch: Climb direct to MESAL 5000 ft, enter on HLDG 177° left or according to ATC clearance.			
			MSA 25 NM RWY 35R



**5000'** Nivel de Transición por ATC / Transition Level by ATC **ALT MNM 5000'**

**MESAL**



CATEGORIA	DIRECTO RWY 35R / Straight in RWY 35R				CIRCULANDO / Circling	ALTN / Alternate Minimums
	LNNAV / VNAV DA 1840'(285')		LNNAV MDA 1920'(365')			
	SSALS	WO SSALS	SSALS	WO SSALS		
A			1.2 Km	1.6 Km	NA	VER PAG. GEN 2.19 See page GEN 2.19
B	1.2 Km	1.6 Km				
C			1.6 Km	2.0 Km		
D						

Para sistemas BARO-VNAV no compensados PROC  
 BARO-VNAV NA BLW -5°C ó ABV 45°C

Veloc. Terrestre Kts	80	100	120	140	160
Angulo DES 3° FPM	425'	531'	637'	743'	849'

MAPt en RW35R

DASA / SECCION AIS-MAP