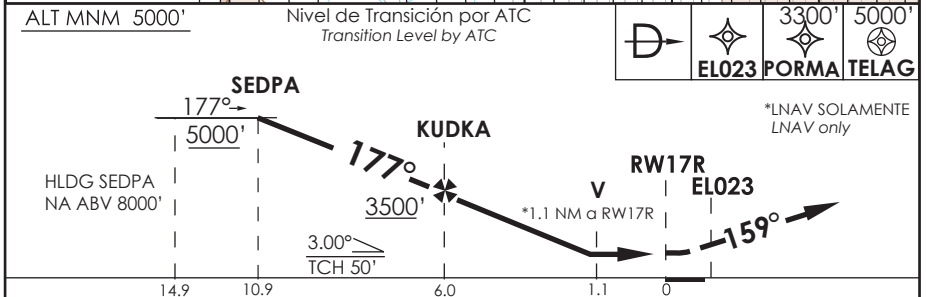
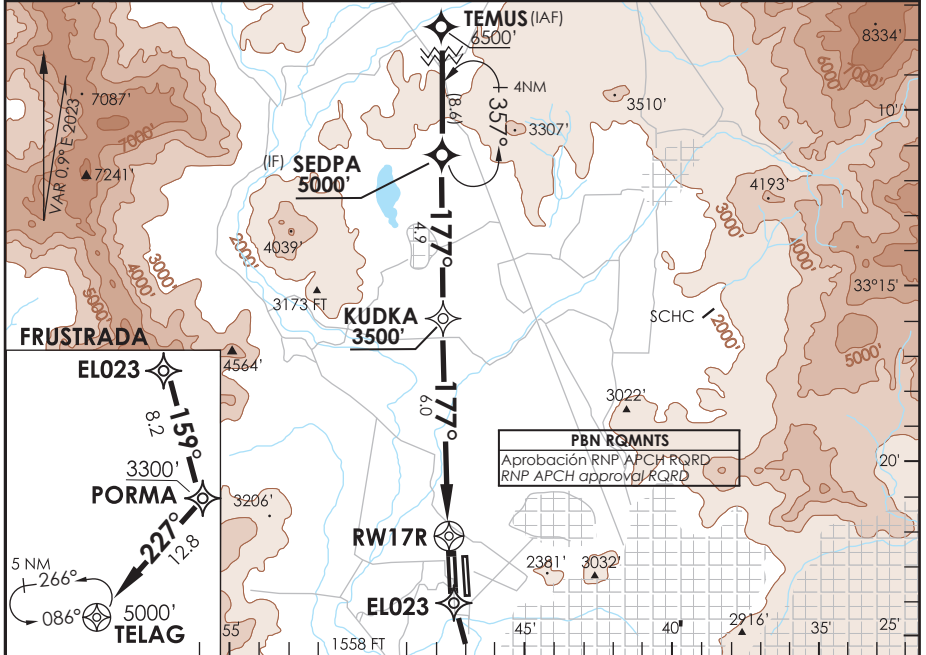


AP. ARTURO MERINO BENITEZ  
**SANTIAGO - CHILE**

**SCEL IAC 13**  
**RNP Y RWY 17R**

|  |  |   |  |
|--|--|---|--|
| ATIS<br>132.1  | SANTIAGO RADAR<br>Santiago Radar 119.7/129.7 | TORRE SANTIAGO<br>Santiago Tower 118.1/118.35 | CONTROL TERRESTRE<br>GND C W 122.5 GND C E 122.2/122.6 |
| <b>RNP</b>   | FINAL APCH CRS<br><b>177°</b>                | MNM ALT KUDKA<br><b>3500'</b>                 | LNAV/VNAV DA(H)<br><b>1880'(329')</b>                  |
| AD Elev. <b>1555'</b><br>THR 17R Elev. <b>1551'</b>  |  |   | 19000 FT   |
| APCH FRUSTRADA: Ascenso directo EL023 - PORMA - TELAG 5000', ingreso HLDG 086° izquierdo o según autorización ATC. |  |   |  |
| Missed Apch: Climb direct to EL023 - PORMA - TELAG 5000', enter on HLDG 086° left or according to ATC clearance.   |  |   | MSA 25 NM RW17R  |



|           |                                     |           |                       |           |                        |  |
|-----------|-------------------------------------|-----------|-----------------------|-----------|------------------------|--|
| CATEGORIA | DIRECTO RWY 17R Straight in RWY 17R |           |                       |           | CIRCULANDO<br>Circling | ALTN<br>Alternate Minimums                   |
|           | LNAV/VNAV DA 1880' (329')           |           | LNAV MDA 1960' (409') |           |                        |  |
|           | ALSF-2                              | WO ALSF-2 | ALSF-2                | WO ALSF-2 |                        |  |
| A         |                                     |           |                       | 1.6 Km    | NA                     | VER PAG.<br>GEN 2.19<br>See page<br>GEN 2.19 |
| B         |                                     |           |                       |           |                        |  |
| C         | 1.2 Km                              | 1.6 Km    | 1.2 Km                |           |                        |  |
| D         |                                     |           |                       | 2.0 Km    |                        |  |

Para sistemas BARO-VNAV no compensados PROC  
 BARO-VNAV NA BLW -5°C ó ABV 45°C

|                      |      |      |      |      |      |
|----------------------|------|------|------|------|------|
| Veloc. Terrestre Kts | 80   | 100  | 120  | 140  | 160  |
| Angulo DES 3° FPM    | 425' | 531' | 637' | 743' | 849' |

MAPT en RW17R