

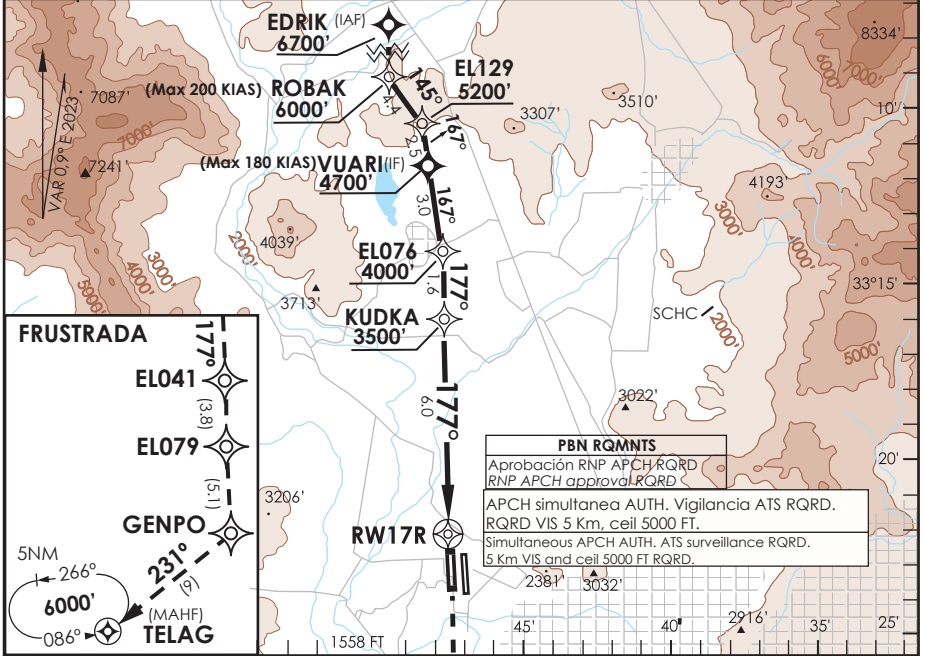
AP. ARTURO MERINO BENITEZ
SANTIAGO - CHILE

SCEL IAC 12
RNP Z RWY 17R

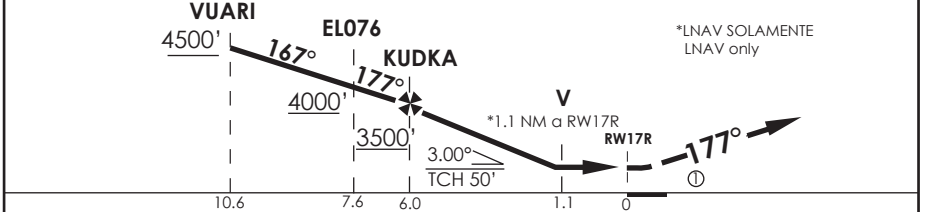
ATIS 132.1	SANTIAGO RADAR Santiago Radar 119.7/129.7	TORRE SANTIAGO Santiago Tower 118.1/118.35	CONTROL TERRESTRE Ground Control GNDC W 122.5	GNDC E 122.2/122.6
RNP	FINAL APCH CRS 177°	MNM ALT KUDKA 3500'	LNAV/VNAV DA(H) 1880' (329')	AD Elev. 1555' THR 17R Elev. 1551'

APCH FRUSTRADA: Ascenso en TR177° hacia EL041 - EL079 - GENPO - TELAG 6000', ingreso HLDG 086° izquierdo o según autorización ATC. Ⓣ
 Missed Apch: Climb on TR177° to EL041-EL079-GENPO-TELAG 6000', enter on HLDG 086° left or according to ATC clearance. Ⓣ

MSA 25 NM RW17R



ALT MNM 5000'	Nivel de Transición por ATC Transition Level by ATC	↑ TR177°	EL041	EL079	GENPO	TELAG 6000'
---------------	--	----------	-------	-------	-------	----------------



CATEGORIA	DIRECTO RWY 17R Straight in RWY 17R				CIRCULANDO Circling	ALTN Alternate Minimums
	LNAV/VNAV DA 1880' (329')		LNAV MDA 1960' (409')			
	ALSF-2	WO ALSF-2	ALSF-2	WO ALSF-2		
A				1.6 KM	NA	VER PAG. GEN 2.19 See page GEN 2.19
B	1.2 Km	1.6 Km	1.2 Km	2.0 KM		
C						
D						

Para sistemas BARO-VNAV no compensados PROC BARO VNAV NA BLW -5°C ó ABV 45°C					
Veloc. Terrestre Kts	80	100	120	140	160
Angulo DES 3° FPM	425'	531'	637'	743'	849'
MAPt en RW17R					

Ⓣ MNM razón ASC APCH Frustrada: 320 FT/NM hasta 4000'
 Missed APCH MNM climb rate: 320 FT/NM to 4000'

DATA / SECCION AS-WAP