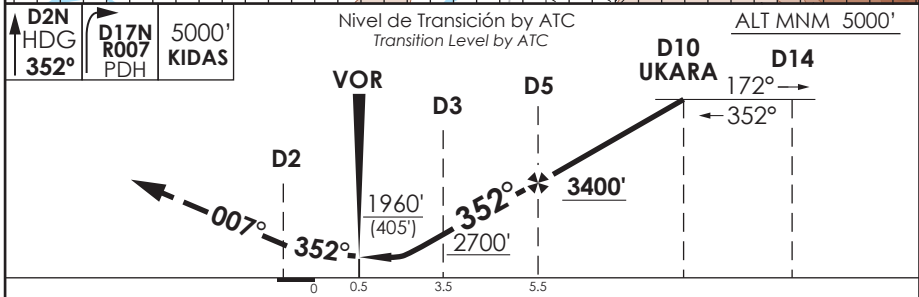
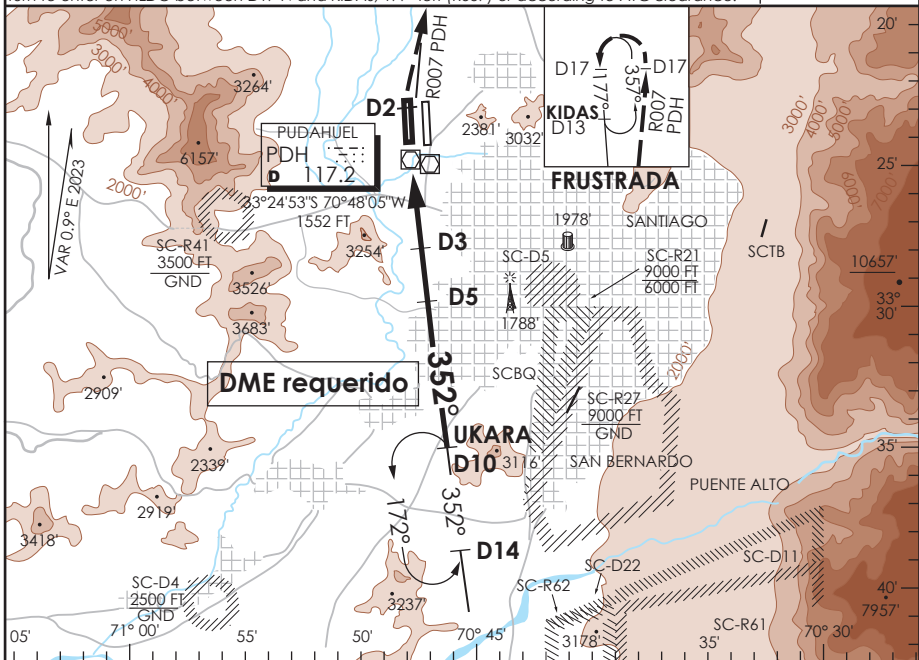


AP. ARTURO MERINO BENITEZ  
**SANTIAGO - CHILE**

SCEL IAC 10  
**VOR Rwy 35L**

ATIS 132.1	SANTIAGO RADAR Santiago Radar 119.7/129.7	TORRE SANTIAGO Santiago Tower 118.1/118.35	CONTROL TERRESTRE Ground Control GNDC W 122.5 GNDC E 122.2/122.6
VOR PDH <b>117.2</b>	FINAL APCH CRS <b>352°</b>	MNM ALT D5 <b>3400'</b>	MDA (H) <b>1960'(405')</b>
AD Elev. <b>1555'</b> THR 35L Elev <b>1550'</b>			19000 FT
<p>APCH FRUSTRADA: Ascenso HDG 352° hasta D2 N, continuar ascenso a 5000' via R007 PDH hasta D17 N, viraje izquierda ingrese HLDG entre D17 N y KIDAS, 177° izquierdo (R357) o según autorización ATC.</p> <p>Missed Apch: Climb on HDG 352° until D2 N, continue climbing to 5000' via R007 PDH to D17 N, left turn to enter on HLDG between D17 N and KIDAS, 177° left (R357) or according to ATC clearance.</p>			
			MSA 25 NM PDH



CATEGORIA	DIRECTO RWY 35L Straight in RWY 35L *	CIRCULANDO Circling	ALTN Alternate Minimums
	<b>MDA 1960' (405')</b>		
	A	NA	VER PAG. GEN 2.19 See page GEN 2.19
	B		
C	2.0 Km		
D			

\* Desalineado 5° respecto a RCL / Offset 5° from RWY center line

Veloc. Terrestre Kts	80	100	120	140	160
Angulo DES 3.1° FPM	439'	548'	658'	768'	878'
Min:Sec(FAF to MAPT 5.0)	3:45	3:00	2:30	2:09	1:53

CAMBIO: FREQ GNDC W  
 Change: GNDC W FREQ

DGAC AMDT 99

15 MAYO 2025

DASA / SECCION AIS-MAP