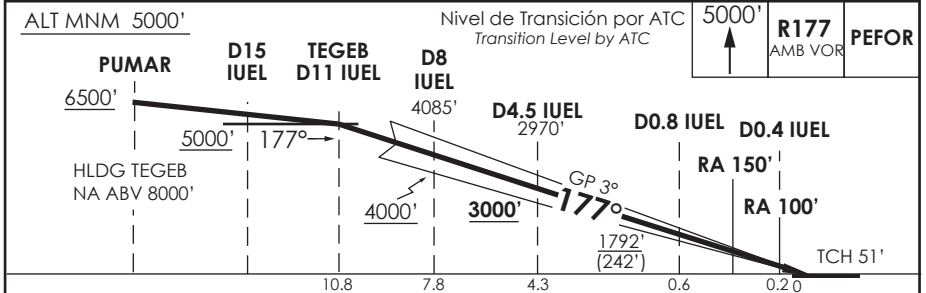
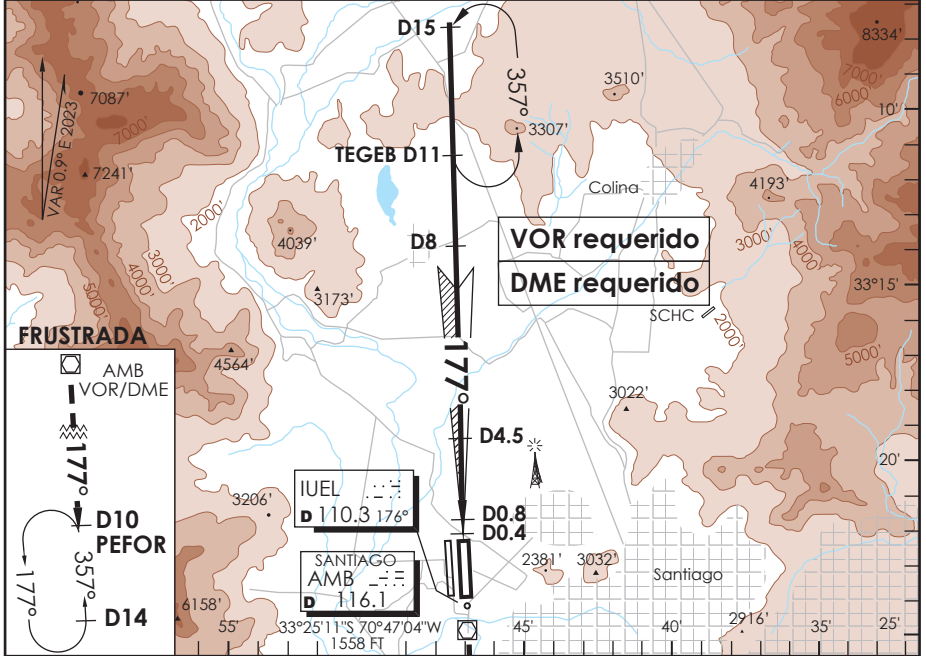


AP. ARTURO MERINO BENITEZ  
**SANTIAGO - CHILE**

SCEL IAC 1  
**ILS Z Rwy 17L**

ATIS 132.1	SANTIAGO RADAR Santiago Radar 119.7/129.7	TORRE SANTIAGO Santiago Tower 118.1/118.35	CONTROL TERRESTRE Ground Control GNDC W 122.5 GNDC E 122.2/122.6
LOC IUEL <b>110.3</b>	FINAL APCH CRS <b>177</b>	GP D4.5 IUEL <b>3000'</b>	CAT II & IIIA/B De acuerdo a CAT According to CAT AD Elev. <b>1555'</b> THR 17L Elev. <b>1550'</b>
APCH FRUSTRADA: Ascenso a 5000' R177 VOR AMB directo PEFOR, ingrese HLDG 357° izquierdo o según autorización ATC. Missed Apch: Climb to 5000' on R177 AMB VOR direct to PEFOR, enter on HLDG 357° left or according to ATC clearance.			19000 FT MSA 25 NM AMB



C A T E G O R I A	DIRECTO RWY 17L Straight in RWY 17L **				* Aeronaves operando "FAIL PASSIVE" DA(H) 1600'(50 FT)  * Aircraft operating "FAIL PASSIVE" DA(H) 1600'(50 FT)
	ILS CAT III-B	ILS CAT III-A	ILS CAT II		
	*	*	RA 100' DA 1650'(100')	RA 150' DA 1700'(150')	
	RVR 50m	RVR 200m	RVR 350m	RVR 500m	

Se requiere certificación de ACFT y Habilitación de Tripulación Especial : DAN 06-02, 06-12  
 Special Aircraft and Aircrew certification required: DAN 06-02, 06-12

Veloc. Terrestre Kts	80	100	120	140	160	** WO IUEL DME PROC NA PROC NA WITHOUT IUEL DME
GP 3° FPM	425'	531'	637'	743'	849'	

DASA / SECCION AIS-MAP