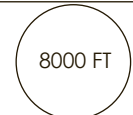


# AP. DIEGO ARACENA IQUIQUE - CHILE

SCDA IAC 5  
RNP Rwy 01 (AR)

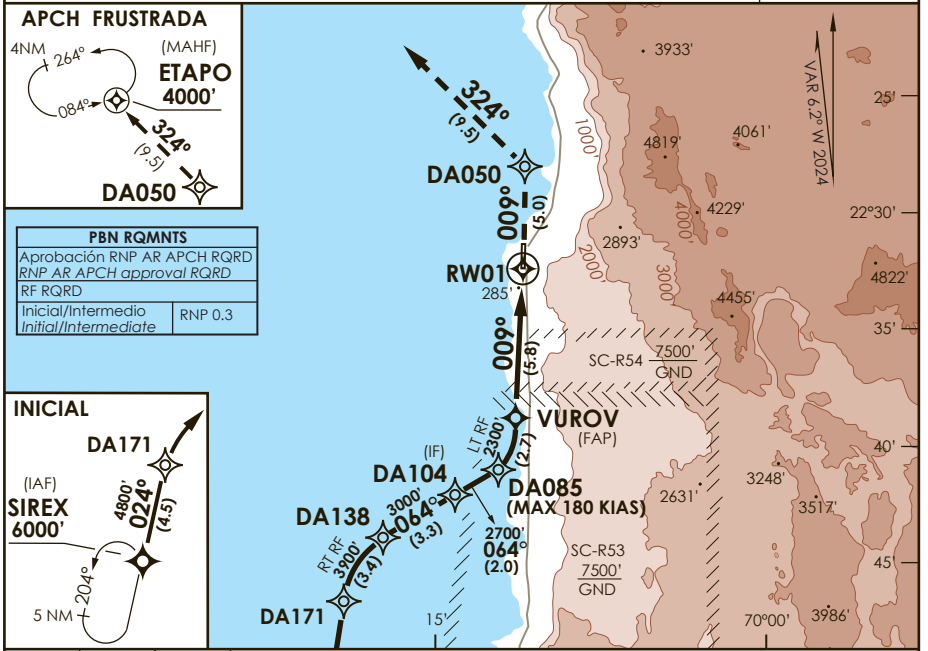
APP IQUIQUE RADAR Iquique Radar Approach	122.7	TORRE IQUIQUE Iquique Tower	118.9	CONTROL TERRESTRE Ground Control	121.7
---	-------	--------------------------------	-------	-------------------------------------	-------

<b>RNP</b>	FINAL APCH CRS <b>009°</b>	MNM ALT VUROV <b>2300'</b>	DA/H ver mínimos DA/H refer to minimums	AD Elev. THR 01 Elev. <b>156'</b>	
------------	-------------------------------	-------------------------------	--	--------------------------------------	---

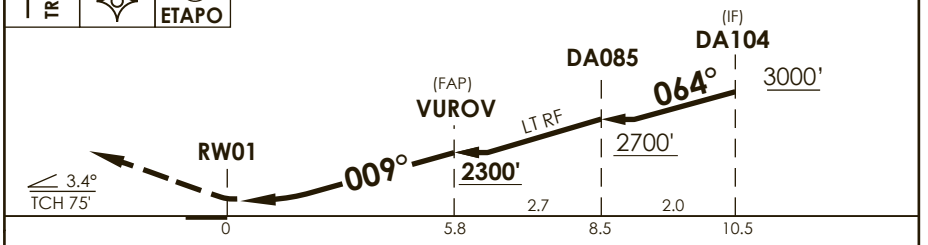
APCH FRUSTRADA: ASC en TR009° directo a DA050, luego en TR324° hacia ETAPO 4000' e ingresar en HLDG.

Missed APCH: Climb on TR009° direct to DA050, then on TR324° to ETAPO 4000' and enter on HLDG.

MSA 25 NM RW01



↑ TR009° DA050 4000' Nivel de Transición por ATC Transition Level by ATC



CATEGORIA	DIRECTO RWY 01 <i>Straight in RWY 01</i>	<b>RNP AR RWY 01 SCDA:</b> Para sistemas Baro VNAV no compensados PROC NA BLW 5°C ó ABV 45°C Mantenerse en o sobre trayectoria PAPI TIL THR Remain on or above PAPI path TIL THR.				
	RNP 0.30 DA 1640' (1484')					
A	5.0 Km	<b>SFC del Tramo Visual (VSS)</b> vulnerada por terreno a 0.43 NM antes de THR 01 y 0.15 NM al W de APCH TR, elevación 285 FT				
B						
C		<b>MNM ALTN: RNP 0.30 : (1484') 5.0 Km.</b>				
Veloc. Terrestre Kts	80	100	120	140	160	<b>RQR AUTORIZACIÓN ESPECIAL PARA ACFT Y TRIPULAC.</b> SPECIAL ACFT AND AIRCREW AUTHORIZATION RQRD LDG NGT NA WO PAPI
Angulo DES 3.4° FPM	481'	602'	722'	842'	963'	
MAPt en DA						

DASA / SECCION AIS/MAP