
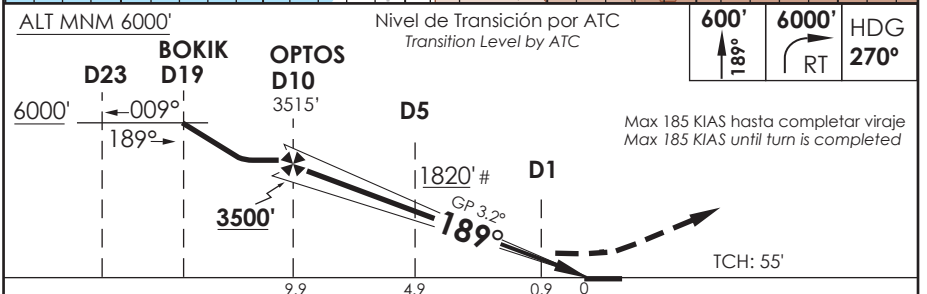
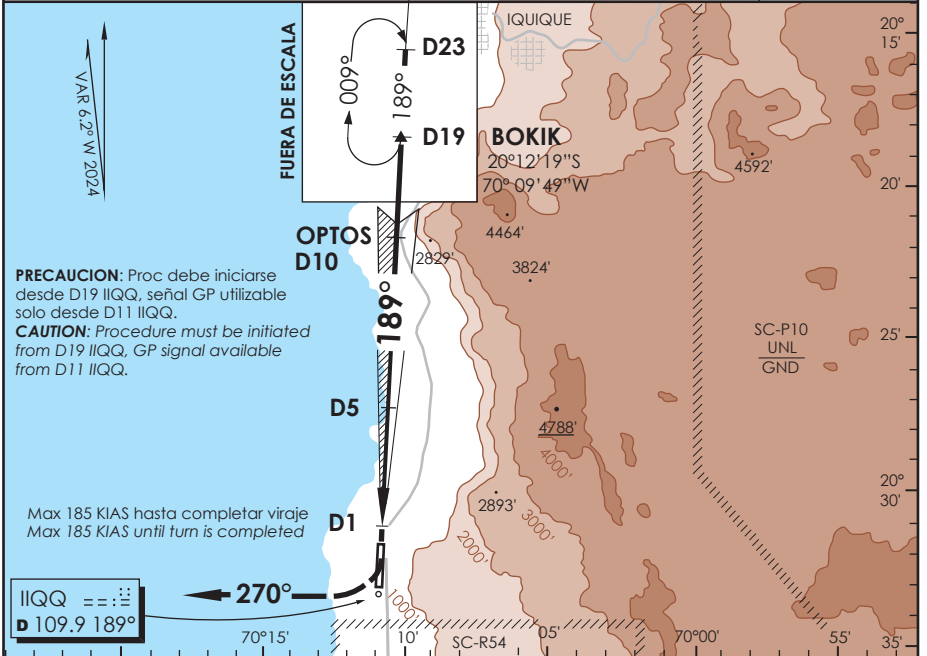


APP IQUIQUE RADAR Iquique Radar Approach 122.7		TORRE IQUIQUE Iquique Tower 118.9		CONTROL TERRESTRE Ground Control 121.7	
LOC IIQQ 109.9	FINAL APCH CRS 189°	MNM ALT OPTOS 3500'	DA(H) 460'(363')	AD Elev. THR 19 Elev 156' 97'	
APCH FRUSTRADA: ASC HDG 189° hasta 600 FT, viraje derecha HDG 270° en ascenso a 6000', luego según autorización ATC. Missed Apch: ASC HDG 189° until 600 FT, right turn HDG 270° climbing to 6000', then according to ATC clearance.					



CATEGORIA	* DIRECTO RWY 19 Straight in RWY 19				CIRCULANDO OESTE ** Circling West	ALTN Alternate Minimums
	* ILS DA 460' (363')		LOC MDA 560' (463')			
	ALSF-1	WO ALSF-1	ALSF-1	WO ALSF-1		
A			1.2 Km	1.6 Km	760' (604') CEIL 800' 800' (644') CEIL 900'	3.2 Km VER PAG. GEN 2.19
B	1.2 Km	1.6 Km				
C			1.6 Km	2.4 Km		
D						

* WO IIQQ DME PROC NA Procedure not authorized without IIQQ DME			** LDG NGT RWY 01 NA WO PAPI Landing at night in RWY 01 not authorized without PAPI			
Veloc. Terrestre Kts	80	100	120	140	160	# Solo LOC
GP 3.2° FPM	453'	566'	679'	793'	906'	# LOC only
Dist.FAF a MAPT 9.0 NM	6:45	5:24	4:30	3:51	3:23	