
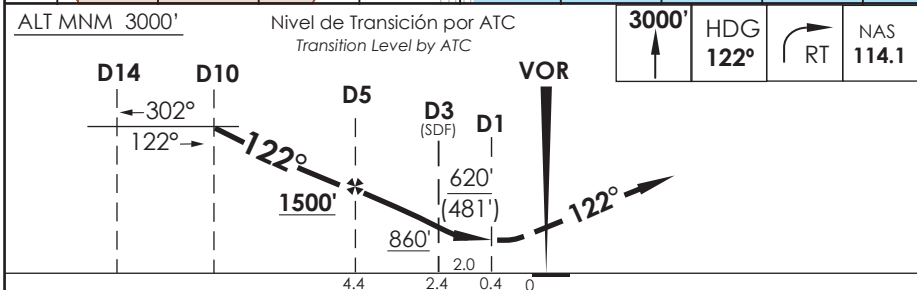
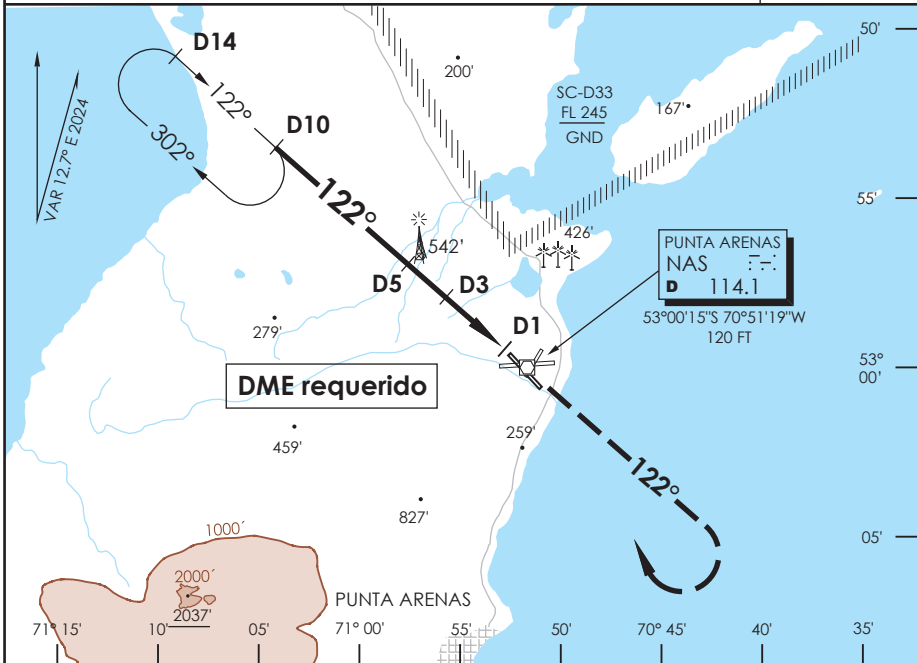


AP. C. IBAÑEZ DEL CAMPO
PUNTA ARENAS - CHILE

SCCI IAC 5
VOR Z Rwy 12

| | | | | | |
|---|-------------------------------|--|------------------------------|--|---|
| ACC PUNTA ARENAS Punta Arenas Center | 123.9/128.1 | TORRE PUNTA ARENAS Punta Arenas Tower | 118.7 | CONTROL TERRESTRE Ground Control | 121.9 |
| VOR NAS 114.1 | FINAL APCH CRS 122° | MNM ALT D5 1500' | MDA(H) 620' (481') | AD Elev. 139' THR 12 Elev. 138' |  |
| APCH FRUSTRADA: Ascenso 3000' HDG 122° viraje derecha directo VOR NAS, luego según autorización ATC. Missed Apch: Climb to 3000' on HDG 122° right turn direct to NAS VOR, then according to ATC clearance. | | | | | |



| | | | | |
|----------|-----------------------------------|--------|------------------------|----------------------------|
| PROGRAMA | DIRECTO RWY 12 Straight in RWY 12 | | CIRCULANDO Circling | ALTN Alternate Minimums |
| | MDA 620' (481') | | | |
| | A | 1.6 Km | 640' (501') | VER PAG. GEN 2.19 |
| | B | | 2.8 Km | |
| | C | | 4.4 Km | |
| D | 960' (821') | | | |

| | | | | | |
|----------------------|------|------|------|------|------|
| Veloc. Terrestre Kts | 80 | 100 | 120 | 140 | 160 |
| Angulo DES 2.94° FPM | 416' | 520' | 624' | 728' | 832' |
| FAF to MAP 4.0 NM | 3:00 | 2:24 | 2:00 | 1:43 | 1:30 |

CAMBIO: VAR
 Change: VAR

DGAC AMDT 98

28 NOVIEMBRE 2024

DASA / SECCION AIS-MAP