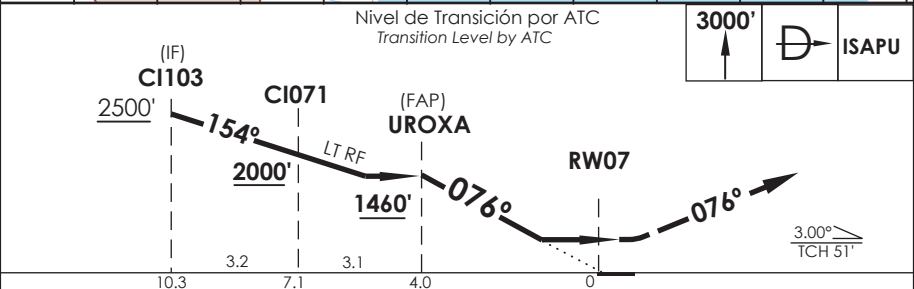
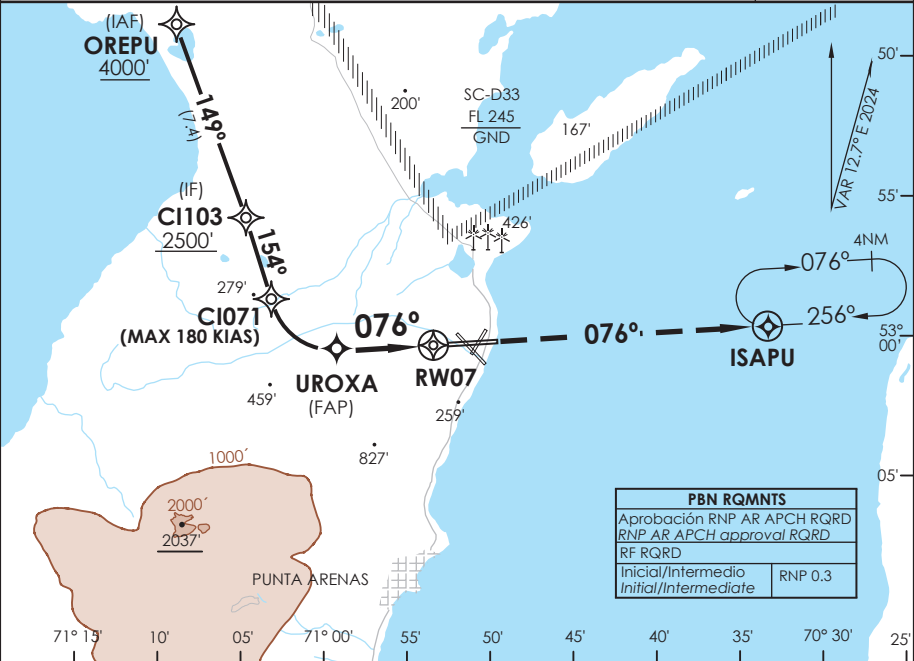


ACC PUNTA ARENAS Punta Arenas Center	123.9/128.1	TORRE PUNTA ARENAS Punta Arenas Tower	118.7	CONTROL TERRESTRE Ground Control	121.9
<b>RNP</b>	FINAL APCH CRS <b>076°</b>	MNM ALT UROXA <b>1460'</b>	DA/H ver mínimos DA/H refer to minimums	AD Elev. THR 07 Elev.	<b>139'</b> <b>139'</b>
APCH FRUSTRADA: Ascenso 3000' directo ISAPU, ingrese a HLDG 256° derecho o según autorización ATC.					
Missed Apch: Climb to 3000' direct to ISAPU, enter on HLDG 256° right or according to ATC clearance.					
					MSA 25 NM RW07



U A B C D	DIRECTO RWY 07 <i>Straight in RWY 07</i>		<b>RNP AR RWY 07 SCCI:</b> Para sistemas Baro VNAV no compensados PROC NA BLW -10°C ó ABV 43°C  <b>MNM ALTN RNP 0.30: VER PAG GEN 2.19</b> See pag 2.19  <b>RQR AUTORIZACIÓN ESPECIAL PARA ACFT Y CREW</b> SPECIAL ACFT AND AIRCREW AUTHORIZATION RQRD
	RNP 0.15 DA <b>470'</b> (331')	RNP 0.3 DA <b>570'</b> (431')	
A			
B	1.6 Km	2.0 Km	
C			
D			
Veloc. Terrestre Kts	80	100	120
Angulo DES 3,0° FPM	425'	531'	637'
MAPt en RW07	140	160	743'
			849'