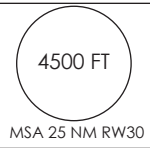


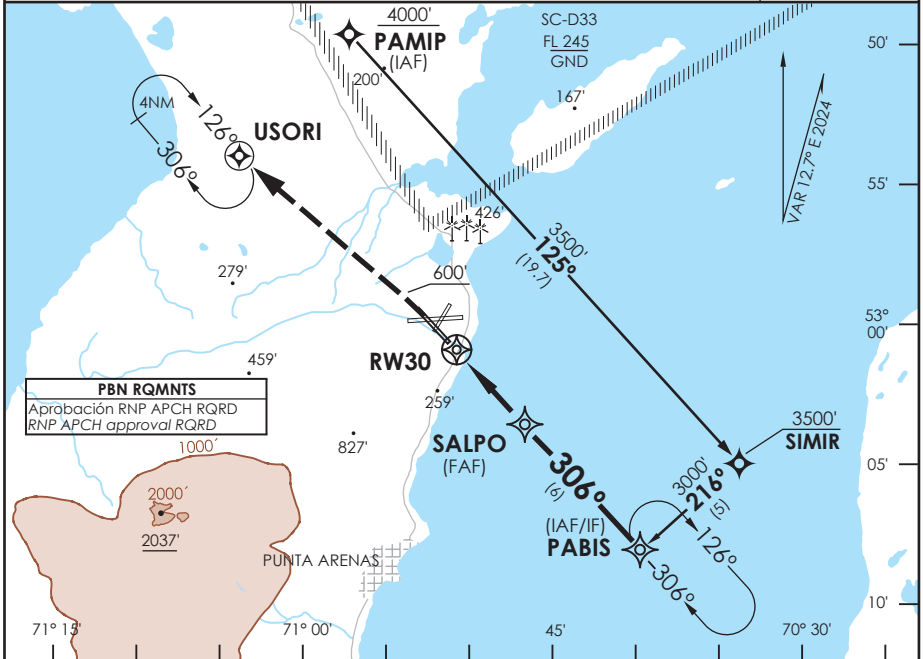
# AP. C. IBAÑEZ DEL CAMPO PUNTA ARENAS - CHILE

SCCIAC 16  
RNP Y Rwy 30

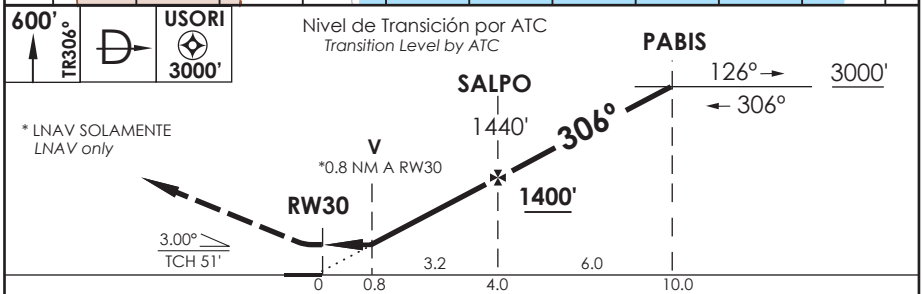
ACC PUNTA ARENAS Punta Arenas Center	123.9/128.1	TORRE PUNTA ARENAS Punta Arenas Tower	118.7	CONTROL TERRESTRE Ground Control	121.9
<b>RNP</b>	FINAL APCH CRS <b>306°</b>	MNM ALT SALPO <b>1400'</b>	LNAV/VNAV DA(H) <b>370'(258')</b>	AD Elev. 139'	THR 30 Elev. <b>112'</b>



APCH FRUSTRADA: Ascenso en TR 306° hasta 600' posterior directo a USORI, ingrese en HLDG 126° derecha o según autorización ATC.  
Missed Apch: Climb on TR 306° to 600' then direct to USORI, enter on HLDG 126° right or according to ATC clearance.



**PBN RQMNTS**  
Aprobación RNP APCH RQRD  
RNP APCH approval RQRD



CATEGORIA	DIRECTO RWY 30 Straight in RWY 30				CIRCULANDO Circling	ALTN Alternate Minimums
	LNAV/VNAV DA <b>370'(258')</b>		LNAV MDA <b>420'(308')</b>			
	SSALF	WO SSALF	SSALF	WO SSALF		
A					640' (501')	1.6 Km
B	1.2 Km	1.6 Km	1.2 Km	1.6 Km	800' (661')	2.8 Km
C					960' (821')	4.4 Km
D						SEE PAGE GEN 2.19

Para sistemas Baro VNAV no compensados PROC BARO-VNAV NA BLW -10°C ó ABV 44°C

Veloc. Terrestre Kts	80	100	120	140	160
Angulo DES 3.0° FPM	425'	531'	637'	743'	849'
MAPt en RW30					

DASA / SECCION AS-MAP