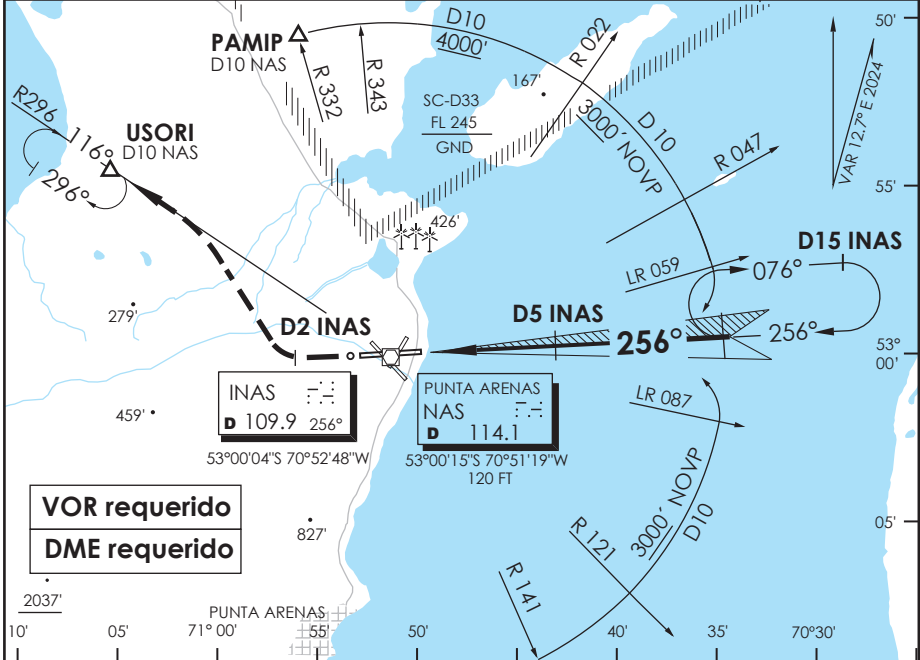


AP. C. IBAÑEZ DEL CAMPO
PUNTA ARENAS - CHILE

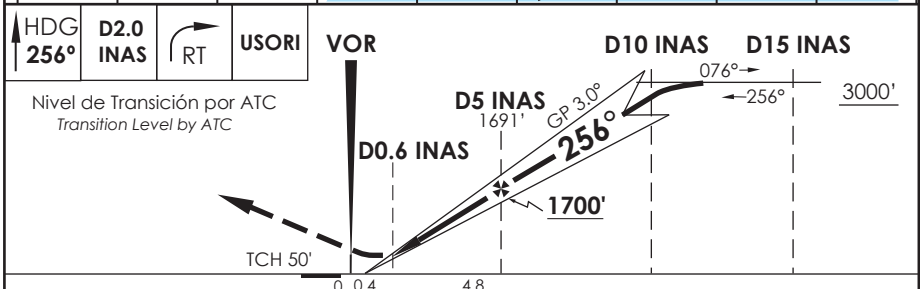
SCCI IAC 1
ILS Z o LOC Z Rwy 25

ACC PUNTA ARENAS Punta Arenas Center	123.9/128.1	TORRE PUNTA ARENAS Punta Arenas Tower	118.7	CONTROL TERRESTRE Ground Control	121.9
LOC INAS 109.9	FINAL APCH CRS 256°	MNM ALT D5 INAS 1700'	ILS DA(H) 312' (200')	AD Elev. THR 25 Elev. 139'	112'

APCH FRUSTRADA: Ascenso HDG 256° hasta D2 INAS, viraje derecha continuando ASC para 3000' e interceptar R296 NAS VOR, DCT USORI, luego según CLR ATC.
 Missed Apch: Climb on HDG 256° until D2 INAS, right turn to continue climbing to 3000' to intercept R296 NAS VOR, direct to USORI, then according to ATC clearance.



VOR requerido
DME requerido



CATEGORIA	DIRECTO RWY 25 <i>Straight in RWY 25</i>				CIRCULANDO <i>Circling</i>	ALTN <i>Alternate Minimums</i>	
	* ILS DA 312' (200')		* LOC MDA 380' (268')				
	ALSF-1	WO ALSF-1	ALSF-1	WO ALSF-1			
A	RVR 750 m	1.2 Km	0.8 Km	1.6 Km	640' (501')	VER PAG. GEN 2.19	
B	ó 0.8 Km				1.6 Km		800' (661')
C							2.8 Km
D	4.4 Km				SEE PAGE GEN 2.19		

* WO INAS DME PROC NA / Procedure not authorized without INAS DME

Veloc. Terrestre Kts	80	100	120	140	160
GP 3.0° FPM	425'	531'	637'	743'	849'
FAF to MAPt 4.4 NM	2:18	2:38	2:12	1:53	1:39

DAS-7 / SECCION AIS-MAP