

AD. GRAL. BERNARDO O'HIGGINS  
**CHILLAN - CHILE**

SCCH IAC 3  
**VOR Y Rwy 22**

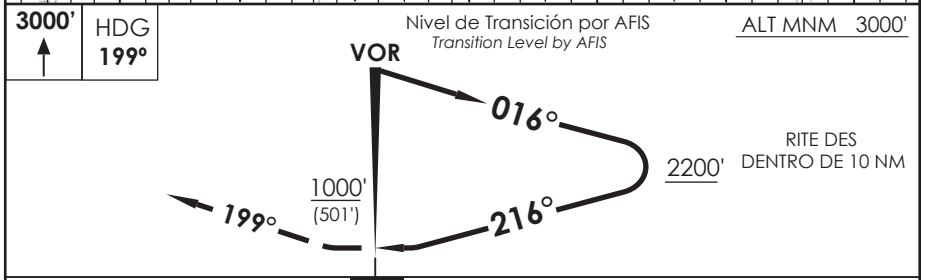
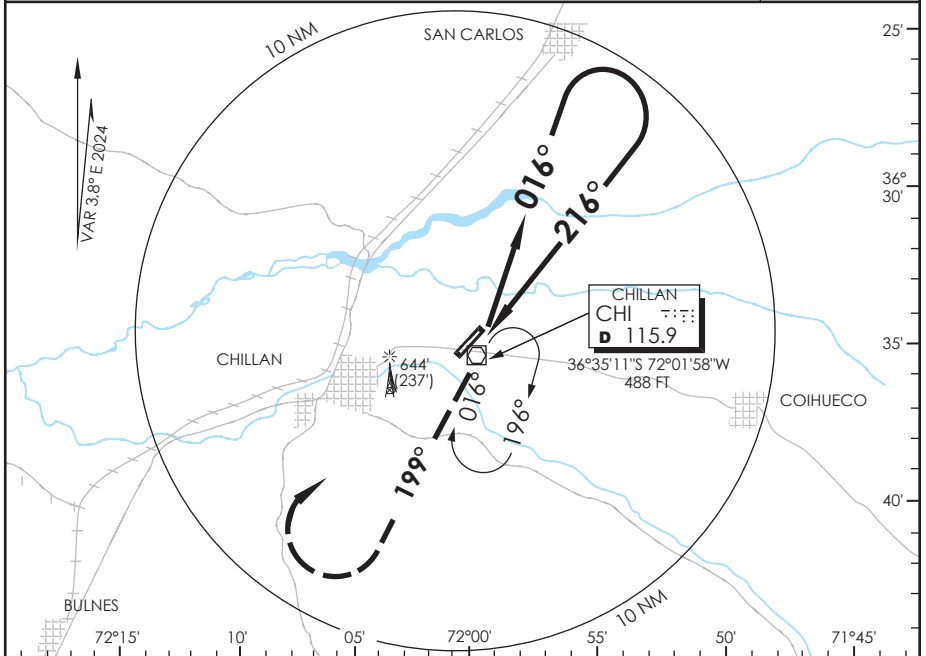
ACC SANTIAGO Santiago Center		135.8/126.3	CHILLAN INFORMACION Chillan Information		127.7
VOR CHI <b>115.9</b>	FINAL APCH CRS <b>216°</b>	<b>WO FAF</b>	MDA(H) <b>1000' (501')</b>	AD Elev. THR 22 Elev.	<b>499'</b> <b>499'</b>

12400 FT

APCH FRUSTRADA: Ascenso 3000' HDG 199° regrese derecha CHI VOR, ingrese en HLDG 016° derecho.

Missed Apch: Climb to 3000' on HDG 199°, right turn return to CHI VOR, enter on HLDG 016° right.

MSA 25 NM CHI



CATEGORIA	DIRECTO RWY 22 Straight in RWY 22	CIRCULANDO Circling	ALTN Alternate Minimums
	MDA <b>1000' (501')</b>		
A	1.6 Km	1000' (501')	1.6 Km
B			
C			
VER PAG. GEN 2.19			