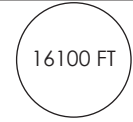
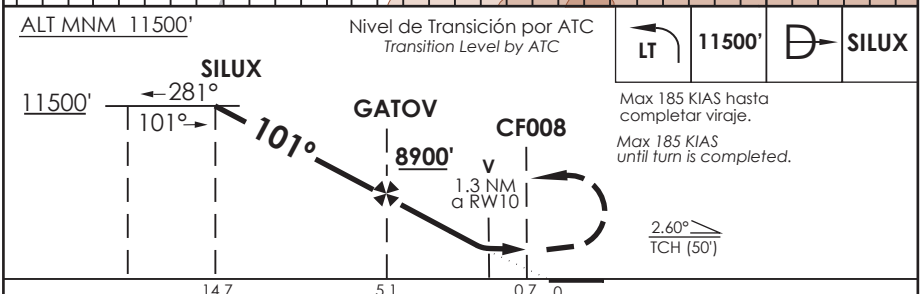
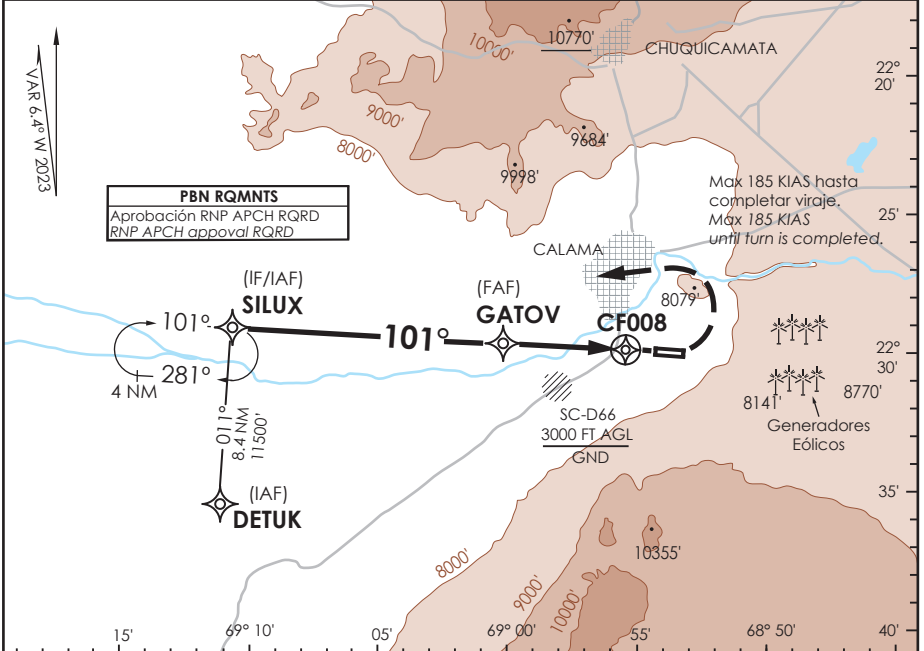


AD. EL LOA CALAMA - CHILE

SCCF IAC 4 RNP Y Rwy 10 (LNAV only)

APP ANTOFAGASTA RADAR APP Antofagasta Radar	134.1/120.9	TORRE CALAMA Calama Tower	118.7	CONTROL TERRESTRE Ground Control	121.8
--	-------------	------------------------------	-------	-------------------------------------	-------

RNP	FINAL APCH CRS 101°	MNM ALT GATOV 8900'	MDA(H) 7900'(469')	AD Elev 7631' THR 10 Elev 7431'	 16100 FT
APCH FRUSTRADA: Viraje izquierda en ascenso para 11500' directo SILUX SILUX ingreso HLDG 101° derecho o según autorización ATC. Missed Apch: Left turn climbing to 11500' direct to SILUX, enter on HLDG 101° right or according to ATC clearance.					



PROGRAMA	DIRECTO RWY 10 Straight in RWY 10	CIRCULANDO NORTE * Circling North *	ALTN Alternate Minimums	
	LNAV MDA 7900' (469')			
	A	1.6 Km	8180'(549')	1.6 Km
	B		8360'(729')	3.2 Km
C	2.4 Km		8860'(1229')	4.8 Km
D				
* NGT LDG RWY 28 NA WO PAPI				

Veloc. Terrestre Kts	80	100	120	140	160
Angulo DES 2,6° FFM	368'	460'	552'	644'	736'
MAPt en CF008					

DATA / SECCION AB-MAP