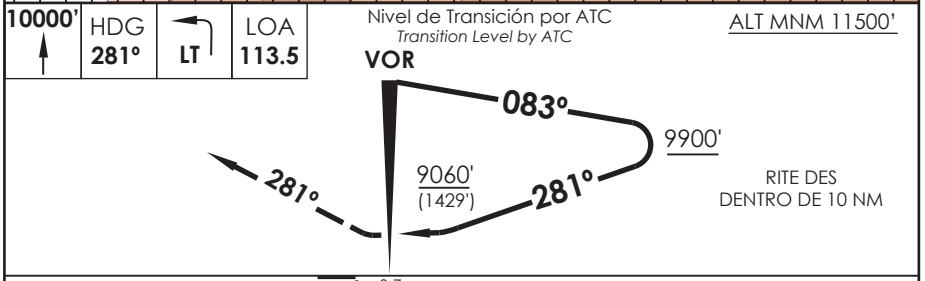
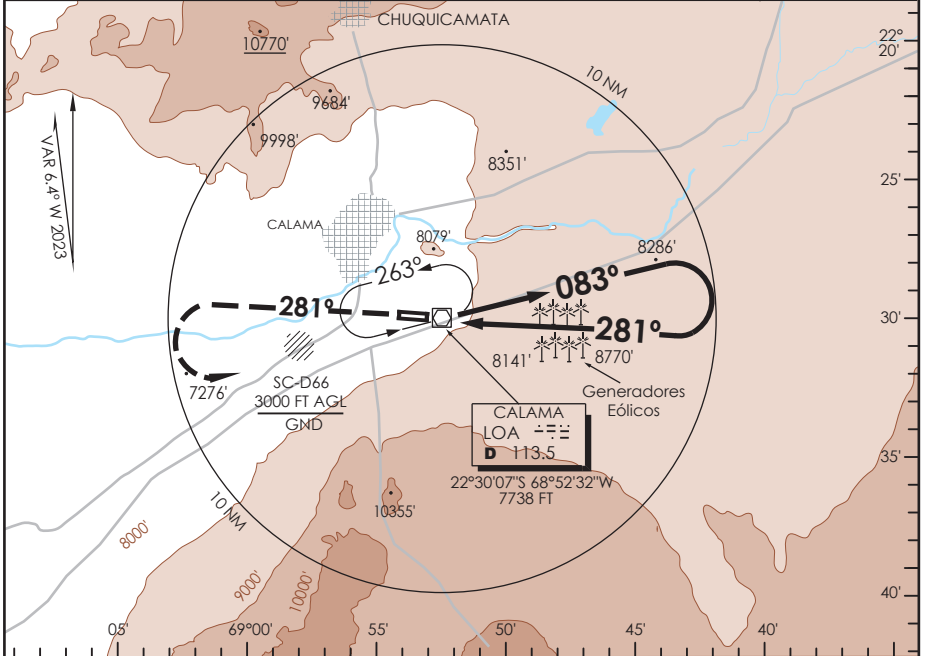


AD. EL LOA CALAMA - CHILE

SCCF IAC 3
VOR Y Rwy 28

APP ANTOFAGASTA RADAR APP Antofagasta Radar		134.1/120.9	TORRE CALAMA Calama Tower		118.7	CONTROL TERRESTRE Ground Control		121.8
VOR LOA 113.5	FINAL APCH CRS 281°	WO FAF		MDA(H) 9060' (1429')	AD Elev THR 28 Elev	7631' 7631'		16100 FT MSA 25 NM LOA
APCH FRUSTRADA: Ascenso a 10000' HDG 281°, viraje izquierda en ascenso para 11500' directo LOA VOR o según autorización ATC. Missed Apch: Climb to 10000' on HDG 281°, left turn climbing to 11500', direct to LOA VOR or according to ATC clearance.								



C A T E G O R I A	DIRECTO RWY 28 <i>Straight in RWY 28</i>		CIRCULANDO NORTE <i>Circling North</i>	ALTN <i>Alternate Minimums</i>	
	MDA 9060' (1429')				
		ALSF-1	WO ALSF-1		
A	1.2 Km	2.0 Km	9060' (1429')	2.0 Km	VER PAG. GEN 2.19
B	1.6 Km	2.4 Km		2.4 Km	
C	4.8 Km		4.8 Km		
D					
NGT LDG RWY 28 NA WO PAPI					

DASA / SECCION AIS-MAP