

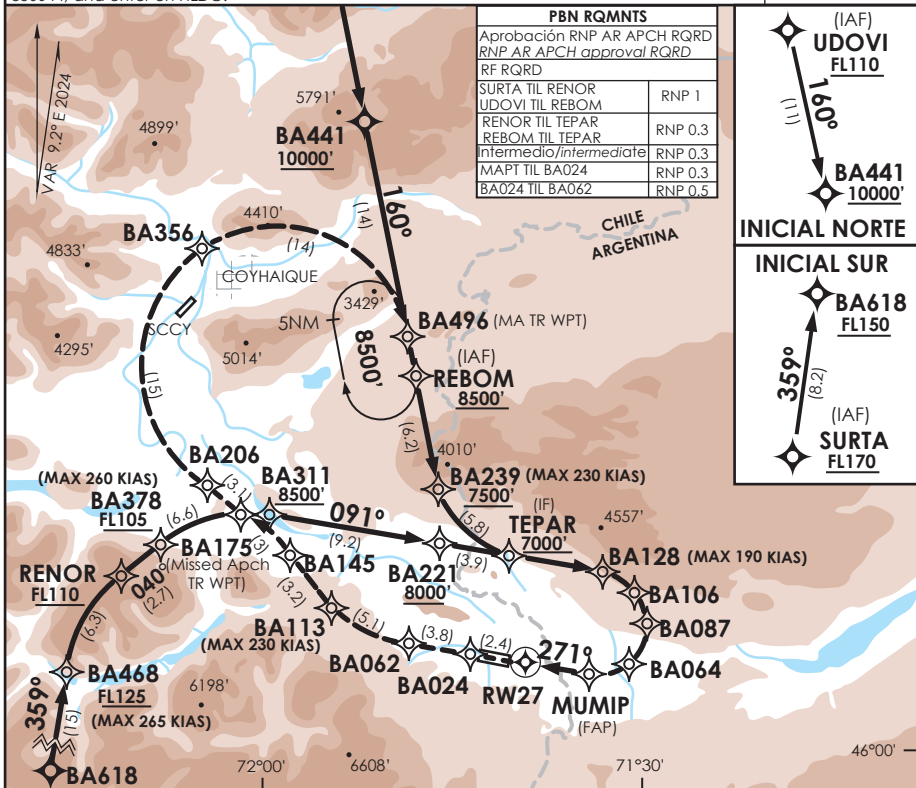
AD. BALMACEDA BALMACEDA - CHILE

SCBA IAC 6
RNP Z Rwy 27 (AR)

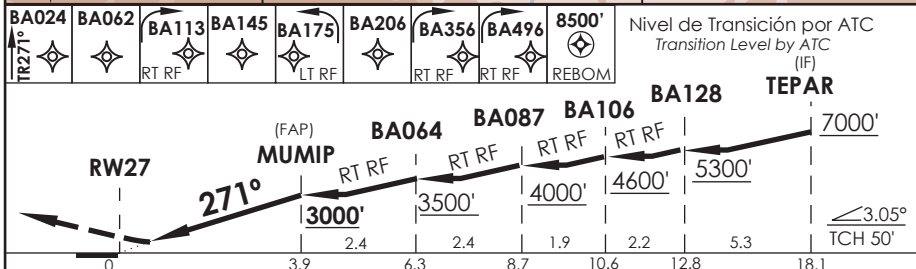
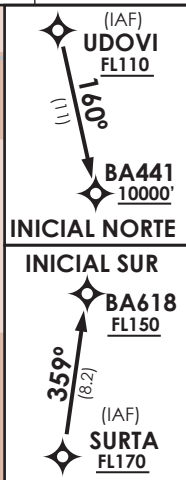
| | | | | | |
|--------------------------------|-------------------------------|------------------------------------|--|--|---|
| BALMACEDA RDR Balmaceda RDR | 119.7 | TORRE BALMACEDA Balmaceda Tower | 118.5 | CONTROL TERRESTRE Ground Control | 121.9 |
| RNP | FINAL APCH CRS 271° | MNM ALT MUMIP 3000' | DA/H ver mínimos DA/H refer to minimums | AD Elev. 1722' THR 27 Elev. 1667' | <div style="border: 1px solid black; border-radius: 50%; width: 60px; height: 60px; margin: 0 auto; display: flex; align-items: center; justify-content: center;"> 11300 FT </div> |

APCH FRUSTRADA: Ascenso en TR271° hacia BA024, para continuar en la trayectoria RNP hacia BA496 - REBOM 8500 Ft e ingresar en HLDG.
Missed Apch: Climb on TR271° to BA024, and then continue on RNP track to BA496 - REBOM 8500 Ft, and enter on HLDG.

MSA 25 NM RW27



| PBN RQMNTS | |
|--|---------|
| Aprobación RNP AR APCH RQRD RNP AR APCH approval RQRD | |
| RF RQRD | |
| SURTA TIL RENOR | RNP 1 |
| UDОВI TIL REBOM | RNP 0.3 |
| RENOR TIL TEPAR | RNP 0.3 |
| REBOM TIL TEPAR | RNP 0.3 |
| intermedio/intermediate | RNP 0.3 |
| MAPT TIL BA024 | RNP 0.3 |
| BA024 TIL BA062 | RNP 0.5 |



| A | DIRECTO RWY 27 Straight in RWY 27 | | | | RNP AR RWY 27 SCBA: Para sistemas Baro VNAV no compensados CAT A/B/C PROC NA BLW -12°C ó ABV 54°C. CAT D PROC NA BLW -12°C ó ABV 30°C |
|---|-----------------------------------|--------|----------|-----------------------------|--|
| | RNP 0.1 DA 2030' (363') | SSALR | WO SSALR | RNP 0.30 DA 2110' (443') | |
| B | 1.2 Km | 1.6 Km | 1.2 Km | 1.6 Km | MNM ALTN RNP 0.3: VER PAG GEN 2.19 See pag 2.19 |
| C | | 2.0 Km | 1.6 Km | 2.4 Km | |
| D | | | | | |

| | | | | | | |
|----------------------|------|------|------|------|------|--|
| Veloc. Terrestre Kts | 80 | 100 | 120 | 140 | 160 | RQR AUTORIZACIÓN ESPECIAL PARA ACFT Y CREW SPECIAL ACFT AND AIRCREW AUTHORIZATION RQRD |
| Angulo DES 3,05° FPM | 432' | 540' | 648' | 755' | 863' | |
| MAPT en DA | | | | | | |

CAMBIO: VAR
Change: VAR

DGAC AMDT 98

28 NOVIEMBRE 2024

DASA / SECCION AS-MAP