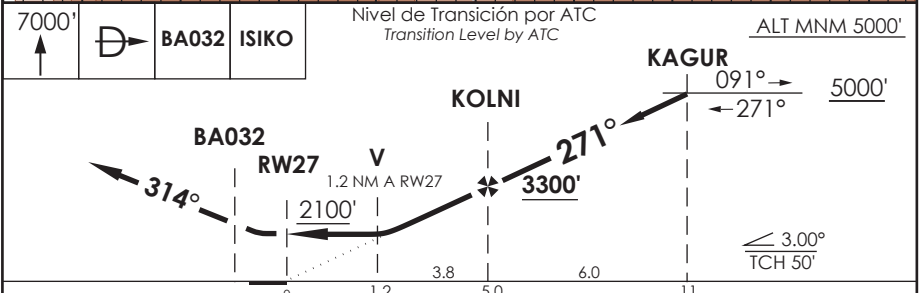
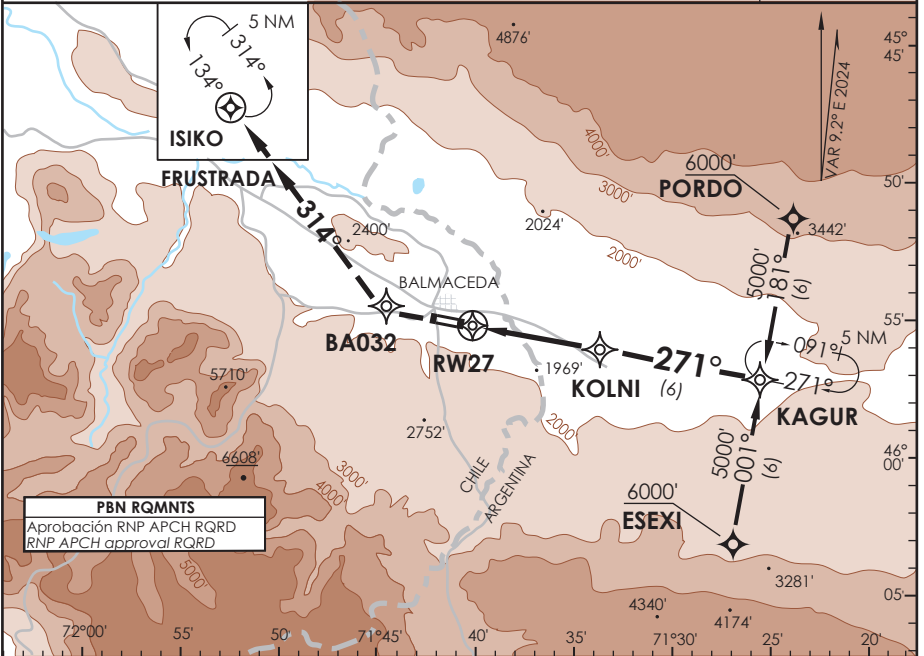


BALMACEDA - CHILE

RNP Y Rwy 27 (LNAV only)

BALMACEDA RDR Balmaceda RDR		119.7	TORRE BALMACEDA Balmaceda Tower		118.5	CONTROL TERRESTRE Ground Control		121.9
RNP	FINAL APCH CRS	271°	MNMM ALT KOLNI	3300'	LNAV MDA(H)	2100' (433')	AD Elev	1722'
							THR 27 Elev	1667'
APCH FRUSTRADA: Ascenso 7000' directo BA032 directo ISIKO, ingrese a HLDG 134° izquierdo o según autorización ATC.								11300 FT
Missed Apch: Climb to 7000' direct to BA032 then to ISIKO, enter on HLDG 134° left or according to ATC clearance.								
								MSA 25 NM RW27



C A T E G O R Í A	DIRECTO RWY 27 <i>Straight in RWY 27</i>		CIRCULANDO <i>Circling</i>	ALTN <i>Alternate Minimums</i>
	LNAV MDA 2100' (433')			
		SSALR	WO SSALR	
A	1.2 Km	1.6 Km	NA	VER PAG. GEN 2.19 SEE PAGE GEN 2.19
B	1.2 Km	1.6 Km		
C	1.6 Km	2.0 Km		
D	1.6 Km	2.0 Km		

Veloc. Terrestre Kts	80	100	120	140	160
Angulo DES 3.0° FPM	425'	531'	637'	743'	849'
MAPt en RW27					