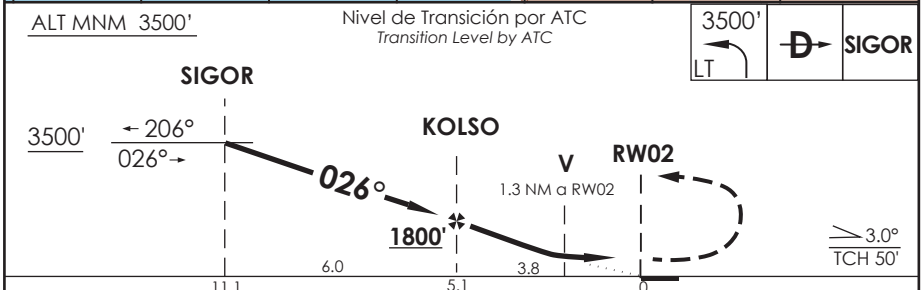
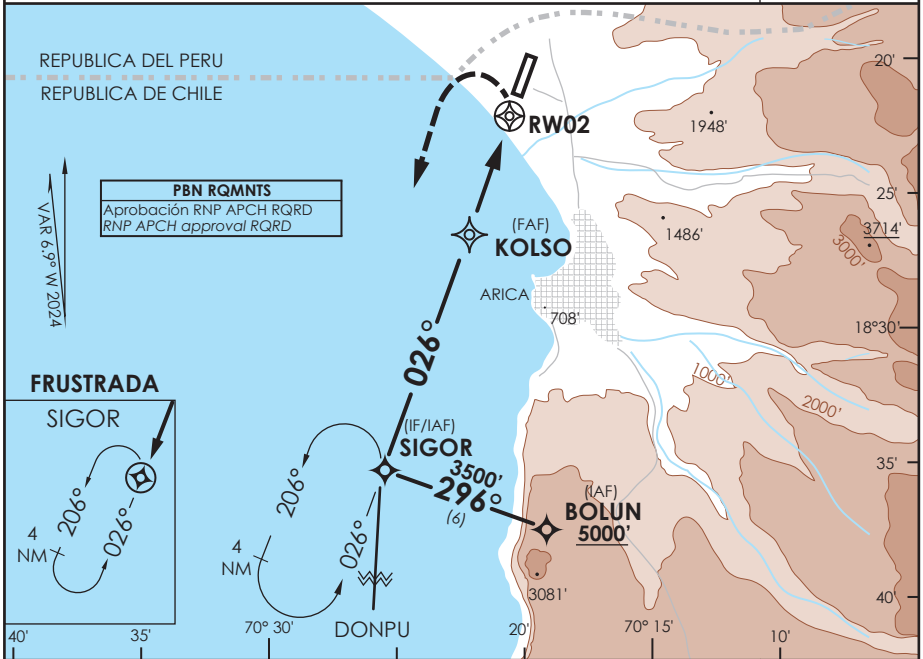


AP. CHACALLUTA  
**ARICA - CHILE**

SCAR IAC 3  
**RNP Rwy 02 (LNAV only)**

APP ARICA Arica Approach	119.9	TORRE ARICA Arica Tower	118.5	CONTROL TERRESTRE Ground Control	121.9
<b>RNP</b>	FINAL APCH CRS <b>026°</b>	MNM ALT KOLSO <b>1800'</b>	LNAV MDA (H) <b>580' (457')</b>	AD Elev THR 02 Elev	<b>166'</b> <b>123'</b>
APCH FRUSTRADA: Viraje izquierda en ascenso para 3500' directo SIGOR Ingreso HLDG 026° izquierdo, luego según autorización ATC.					11000 FT
Missed Apch: Left turn climbing to 3500' direct SIGOR, enter on HLDG 026° left, then according to ATC clearance.					
					MSA 25 NM RW02



CATEGORIA	DIRECTO RWY 02 <i>Straight in RWY 02</i>	CIRCULANDO ESTE Circling East	ALTN Alternate Minimums			
	LNAV MDA <b>580' (457')</b>					
	A	1.6 Km	640' (474') 960' (794')	1.6 Km		
	B	2.4 Km	1120' (954') 1460' (1294')	4.8 Km		
C			VER PAG. GEN 2.19			
D						
Veloc. Terrestre Kts		80	100	120	140	160
Angulo DES 3,0° FPM		425'	531'	637'	743'	849'
MAPt en RW02						

DASA / SECCION AIS-WAP