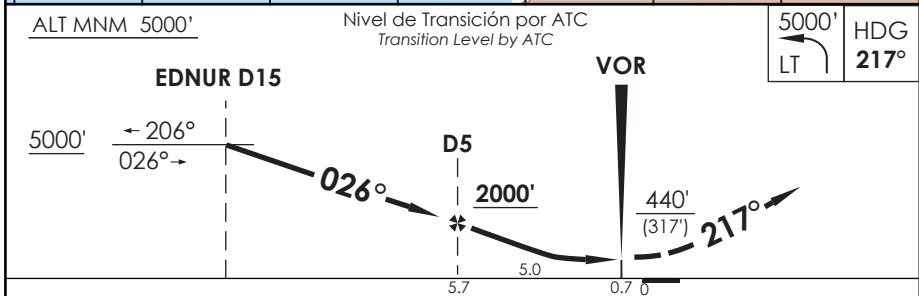
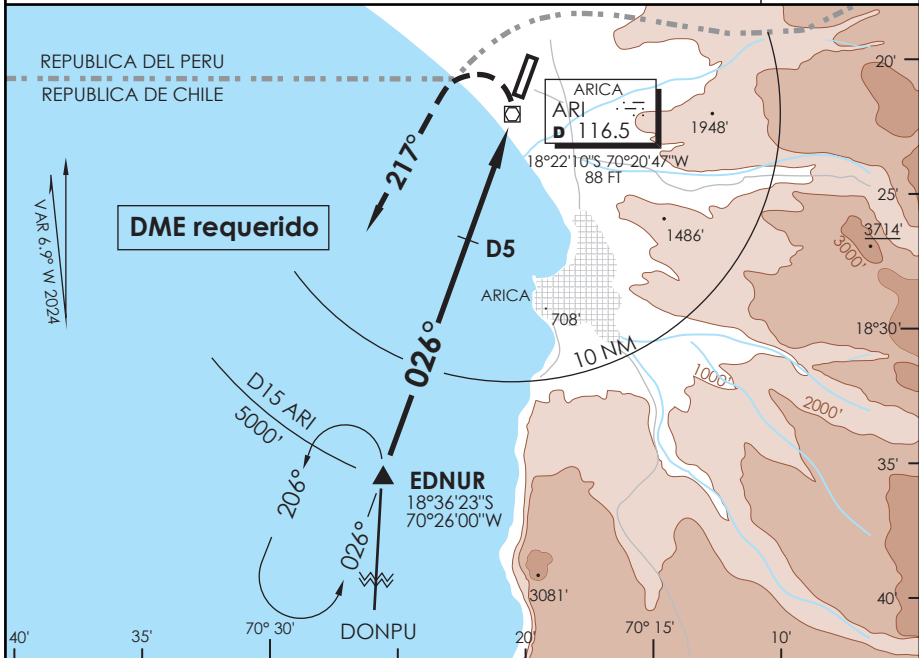


APP ARICA Arica Approach	119.9	TORRE ARICA Arica Tower	118.5	CONTROL TERRESTRE Ground Control	121.9
VOR ARI 116.5	FINAL APCH CRS 026°	MNM ALT D5 2000'	MDA (H) 440' (317')	AD Elev THR 02 Elev 166' 123'	11000 FT
APCH FRUSTRADA: Viraje izquierda HDG 217° en ascenso para 5000', luego según autorización ATC. Missed Apch: Left turn HDG 217° climbing to 5000', then according to ATC clearance.					
					MSA 25 NM ARI



C A T E G O R I A	DIRECTO RWY 02 Straight in RWY 02	CIRCULANDO ESTE Circling East	ALTN Alternate Minimums	
	MDA 440' (317')			
	A	640' (474')	1.6 Km	VER PAG. GEN 2.19
	B	960' (794')		
	C	1120' (954')	4.8Km	
D	1460' (1294')			

Veloc. Terrestre Kts	80	100	120	140	160
Angulo DES 3,02° PFM	427'	534'	641'	748'	855'
FAF to MAP 5.0 NM	3:45	3:00	2:30	2:08	1:52